

FENDT

Fendt MOMENTUM





		MOMENTUM 16	MOMENTUM 24
--	--	------------------------	------------------------

Working width	m	11.2	16.8
Number of rows		16	24
Row spaces	cm	70	70

Next level – perfect precision.

Even crops are the key to maximum yield. And it all starts with the planting.
The Fendt MOMENTUM hails a new era in precision planting.

A big step

Farmers face many challenges, like making the most of the peak planting window, minimal ground compaction, minimising downtimes – right down to setting and applying the ideal machine parameters. The Fendt MOMENTUM has been developed to help you take on these challenges in the best way possible.

- 4580 litres of seed
- 3785 litres of liquid fertiliser
- LoadLogic weight management
- Tyre inflation system
- Precision ground engagement
- Precision seed placement
- Curve compensation
- Fertiliser application
- Minimum tillage
- Accurate data collection



Next level –
seed placement.

Homogeneity

If crops grow unevenly or seeds are spaced unevenly, the plants will compete for the growth factors sun, water, heat and nutrients. Precisely spaced seeds, uniform seed placement and eliminating pinch rows for precise longitudinal distribution mean there are enough growth factors to go around. This gives you uniform crops and maximum yield potential.

In the right place at the right time

This is especially true for the seed. We've all asked ourselves, "When's the best time to plant which fields? Is it better to plant early or is it wiser to wait?" Even a couple of days can make the difference to the results of the harvest. Planting too early can lead to losses if the conditions are cold and damp. Planting too late reduces yield as you're not making the most of the potential growth time. The weather is often very unpredictable in the planting season. Rain can delay work by several days. Only powerful technology can maximise on short planting windows.



Well-positioned seed

It is frustrating and causes high losses when you miss out sections or plant the same area twice. Anything other than 100% planting accuracy affects the result enormously. For this reason, precise spacing and planting are crucial for yield potential.

Not too shallow, not too deep

Losses due to incorrect planting depth are not uncommon. When you drive faster, you need to adjust the tillage disc downforce to avoid reducing the drop depth when the row unit floats. Studies show that if the seed is not planted at the right depth with the right soil moisture, this has a direct influence on the yield.

Fendt MOMENTUM –
fast, precise, powerful.

BASIC BUILD

Accurate results with high-precision technology.

Strong together

The Fendt MOMENTUM has countless features that make this a unique and high-precision machine. From the toolbar to the fertiliser, from the residue manager to the row unit – all the components work together in perfect harmony. Precision technology for sustainable and economical farming.

LoadLogic weight management system

A high tyre pressure ensures the tyres can handle well at maximum capacity. Apply minimal tyre pressure to fully protect the soil. Thanks to weighing cells on every tyre, the weight management system ensures that the pressure of each tyre is as low as possible and as high as necessary. The system adjusts the internal tyre pressure automatically, going by the weight, speed and pre-selected mode.

Weight distribution strategies

The LoadLogic weight management option also includes a hydraulic weight distribution system. This includes 3 weight management modes: Load Balance, weight centralised over the tandem chassis, and floating position. Load Balance mode evenly distributes the load of the machine across all contact points. Weight centralising mode takes the load off the outer support wheels and the entire weight is carried by the tandem chassis. It also makes sure there is enough support pressure so the in-line ballast weights do not lift up the wings. In floating position mode, the active hydraulic wing ballast is switched off.

Fertiliser tank

The Fendt MOMENTUM comes with an optional 3785-litre liquid fertiliser tank. This liquid fertiliser tank can be filled from the ground and provides the machine with vApply modules on each row unit. This system measures the flow rate and controls the application rate so that an equal amount of liquid fertiliser is always applied, under any conditions.

Twin seed tanks

Both seed tanks combined hold 4581 litres, which is enough to cover 10 seeds/m² over up to 80 hectares of land. There's nothing to stop continuous, uninterrupted productivity. There is a large platform to access the seed tanks.

Row unit

The row unit is electrically driven, for the best possible planting control, SectionControl and curve compensation. The advantage here is that the components are highly reliable. The accuracy of the vacuum metering is 99.5% and is compatible with a wide range of seeds. Using the electric drive, the seed-to-seed distances can be maintained on any turn and SectionControl can switch the row unit on and off with the utmost precision.

Liquid fertiliser

This option includes a 3785-litre liquid-fertiliser tank, pumping system, control system to the row units and a vApply module on each row unit. The vApply module controls the output quantity and monitors the flow rate.



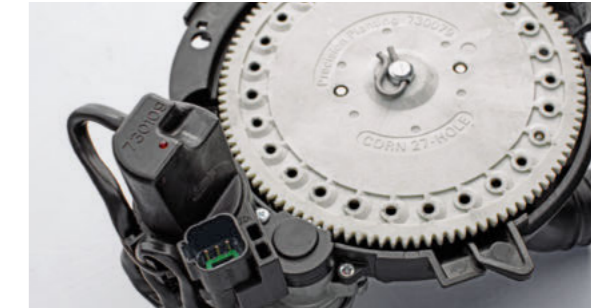
Seed

The Fendt MOMENTUM has two separate seed tanks. The tanks can be easily reached via a platform and come with the option of an active level sensor for monitoring.



vDrive

The row units are electrically driven. The vDrive is marked by its outstanding reliability and precision.



LoadLogic weight management system

Hydraulic cylinders can be used to adjust the wing pressure of the Fendt MOMENTUM.



Tyre inflation system

The tyre inflation system is part of the LoadLogic weight management system. Various sensors help automatically adjust the tyre pressure.

ROW UNIT

Details that make all the difference.

Consistently accurate planting

Uneven soils are an enormous problem at high working widths. It becomes a challenge to maintain accurate ground contact, so as not to risk compaction or too little soil contact. Precision planting is extremely important for accurate emergence. If you plant some seeds deeper than others, you will get uneven emergence. Individual plants will be dominated by others and cannot grow to their full potential. DeltaForce solves this problem on the Fendt MOMENTUM. With this system, the standing pressure on the depth gauge wheel is measured 200 times per second for each row unit, and adjusted accordingly. In addition to automatic row unit downforce, the MOMENTUM is equipped with a patented Vertical Contouring Toolbar (VCT). Sensors on the row units always position them parallel to the ground, for perfect ground adjustment and row unit downforce at all times. The Vertical Contouring Toolbar (VCT) compensates height differences of 165 cm. Everything you need for even root development and uniform crops along the working width.

Row unit

Planting accuracy varies greatly in conventional systems due to the size and shape of the seed. Missed or re-worked sections or even insufficient spacing causes high losses. Often the seed is so inhomogeneous that you need to find an average from the spacing settings, but this often means not achieving the best results.

With the Fendt MOMENTUM's vSet metering system, this problem is a thing of the past. The metering system consists of a flat disc, which the seeds are pulled through by vacuum. The metering disc is small in diameter. As a result, lower centrifugal forces act on the seeds during the singulation process. Combined with an automatic singulator that strips off excess seeds, you can achieve a metering accuracy of more than 99.5% for maize and soybeans. The Fendt MOMENTUM comes with different metering discs to suit a variety of different seeds and crop types. In combination with the zero-maintenance and fault-free electric vDrive, the Fendt MOMENTUM is ready for rapid planting speeds.

Maximum performance

The Fendt MOMENTUM comes with an optional SpeedTube seed tube. With the electrically driven seed tube, you can achieve a higher travel speed for maize and soybeans. Two feeding wheels remove the seed from the metering disc and transfer it to a conveyor belt. The conveyor belt transports the seed directly into the seed furrow. The SpeedTube is only suitable for corn and soy. With SpeedTube, the seed remains unaffected by parameters such as gravity and travel speed.



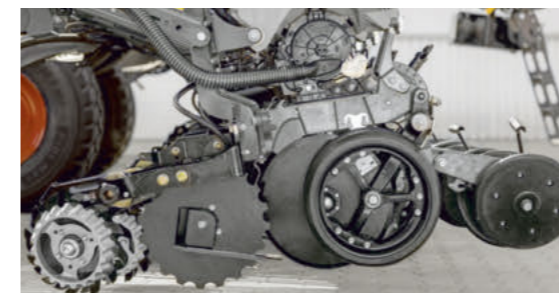
Planting

The WaveVisionStandard seed tube (left) has a spacing sensor and is tungsten-coated. The SpeedTube seed tube (right) is for high-speed planting. This can increase productivity and performance.



vSet metering unit

The vSet is easy to use, incredibly accurate and easy to maintain. It has an extremely high singulation accuracy.



Row unit

The row unit consists of the metering unit, seed tube, gauge wheels, residue manager, tillage disc and other components. With this modular system, you can select the parts to give you the right solution whatever the conditions.



Hydraulic DeltaForce

Creates a specific downforce for each row for the right standing pressure for different soil types and planting conditions.

DETAILS

Every row counts!

Curve compensation

The Fendt MOMENTUM features curve compensation. But what does that mean for you in practice? With a conventional system, you drive down the middle of every single row, even when cornering. This creates a much greater distance between the plants in the outer contour and they are much closer together on the inside. Independently driven units can be accelerated or slowed down specifically during cornering. This is to compensate for different speeds on the inside and outside line, guaranteeing that each plant grows at the same distance from each other.

Furrow opener

For no or low-till farming method five different tillage discs are available. These come in different shapes to suit your work. The ripple blade is for aggressive cutting while aggressively breaking open the soil. The bubble blade plus flute blade, on the other hand, ensure very little soil breakage, which causes minimal disturbance to the soil capillaries, and with it the water supply from the deeper layers.

Residue manager

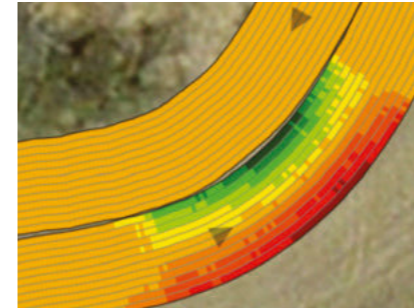
We have a range of residue manager to give you the best solution for your farm. Depending on the agricultural conditions, the Fendt MOMENTUM can be equipped with different residue wheels. These have the task of clearing the seed row of plant debris, clods or other obstacles. As a result, the residue manager improve planting, increase the temperature in the seed row and lower the risk of fungicide. These factors are very important for ideal germination and uniform emergence. The double disc blade forms a solid V-shaped furrow.

Furrow closer

You can adjust the contact pressure and the width of the furrow closers in different stages. This means you can adapt to changes in conditions and the furrow can be closed for different soil types. Depending on the conditions, you can choose between a rubber version or a cast version.

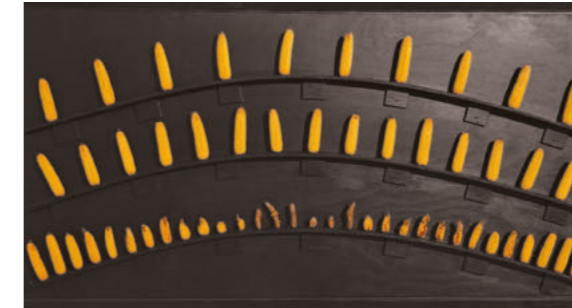
Curve compensation

Reduces yield losses due to emergence variations in undulating rows and headlands. Conventional technology below; Fendt MOMENTUM with curve compensation above.



Test results

The picture below shows the influence of contours on the ear size when maize planting. Without curve compensation, the inner and outer rows show losses.



Tillage discs

Soil types vary widely depending on the region. Various tillage discs are available to suit.



Pressure rollers

Choose a V-shaped rubber pressure roller or a V-shaped steel pressure roller.



Ausstattungsvarianten und technische Daten.

Sehr geehrte Kundinnen und Kunden,
unser Antrieb bei Fendt ist es, Ihnen die innovativsten Maschinen
und Lösungen bereitzustellen, damit Sie Ihre Arbeit noch effizienter
und komfortabler erledigen können. Dabei entwickeln wir unsere
Produkte und deren Ausstattungsvarianten stetig weiter. Sie finden
deshalb alle technischen Daten und Ausstattungsvarianten
tagesaktuell auf unserer Website.



Scannen Sie einfach den QR Code oder
folgen Sie diesem Link:
fendt.com/momentum-data

FENDT

Leaders drive Fendt.



www.fendt.com

AGCO GmbH - Fendt Marketing
87616 Marktoberdorf, Germany

EN/2001



Fendt is a worldwide brand of AGCO.

All details regarding scope of delivery, appearance, performance, dimensions and weights, fuel consumption and running costs of vehicles reflect the latest information available at the time of print. These may change by the time of purchase. Your Fendt dealer will be happy to inform you about any changes. The vehicles shown do not feature country-specific equipment.