

FOR THE PRODUCER

40-SERIES™ GRAIN BINS



PROVEN & DEPENDABLE™

WWW.GRAINSYSTEMS.COM

PROVEN & DEPENDABLE

The demands of farming are never ending. The risks are high. You need grain system solutions that maximize productivity and minimize downtime. We are driven to provide top-of-the-line products that will protect, condition and move the grain you work so hard to produce. And our network of dealers is committed to support you and your operation's growth every step of the way.

Our commitment and focus have resulted in GSI becoming the world's number one manufacturer of grain bins and a global leader in drying and material handling equipment. However, it is your dedication that inspires us to create the best grain systems possible.

Today's production requirements demand systems that excel in performance and are reliable year after year. In addition, easy installation, simple operation, durability, flexibility, and operation efficiency are all carefully considered in the design and construction of every GSI product manufactured.

THAT'S WHY GSI.



GSI PRODUCT LINEUP

40-SERIES GRAIN BINS

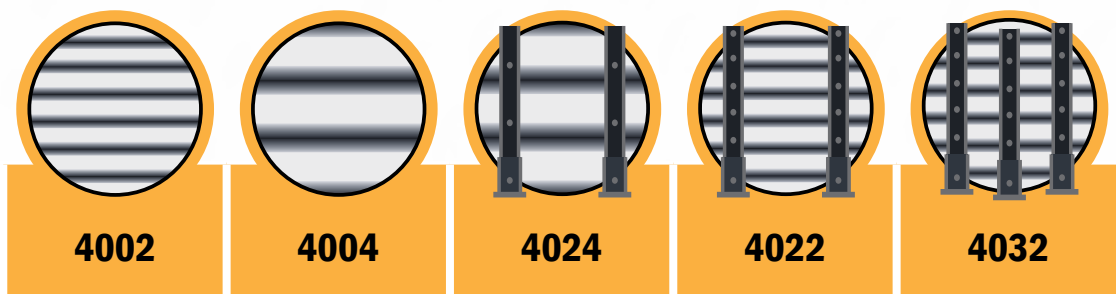
BUILD. EXPAND. EXPAND MORE.

No matter how high yields are, grain prices at harvest are no guarantee. Uncertain weather and market volatility increase the risk. Growers managing these factors and capitalizing on market opportunities depend on GSI for onsite grain storage that can grow and expand as needed.

When determining the best system for your operation, we know that what's protected inside the bin is what counts. Every product manufactured by GSI is designed with this in mind.

From the initial site analysis, to developing a grain storage plan, to final completion of the project, GSI's strong network of dealers is committed to supporting you and your operation's growth.

As your farm acreage and yields continue to grow, GSI grows with you. From 1,000 to 1.9 million bushel capacities, our full line of grain bins and accessories is customized to fit your needs and maximize your profitability.



	UNSTIFFENED BINS		STIFFENED BINS		
--	------------------	--	----------------	--	--

	4002	4004	4024	4022	4032
APPROXIMATE BUSHEL CAPACITY	1,600 to 62,000	1,700 to 61,000	1,000 to 282,900	7,200 to 122,000	15,000 to 1.9 million
STIFFENERS PER SIDEWALL SHEET	none	none	2	2	3
CORRUGATION	2.66"	4"	4"	2.66"	2.66"
DIAMETER	15' to 48'	15' to 48'	12' to 72'	18' to 60'	21' to 156'
NUMBER OF RINGS	4 to 15	3 to 10	3 to 21	12 to 26	12 to 40

FEATURES

ROOF PANELS

40-Series™ roof panels incorporate a 3" tall rib with over-and-under lap profiles ensuring a precise fit (see illustration). 3-bend rib profiles are also incorporated in the new design for increased strength to stand up even in the harshest environments.



HIGHER CAPACITY AND SUPERIOR PROTECTION

Each GSI bin is efficiently designed to handle maximum loads for unmatched strength.

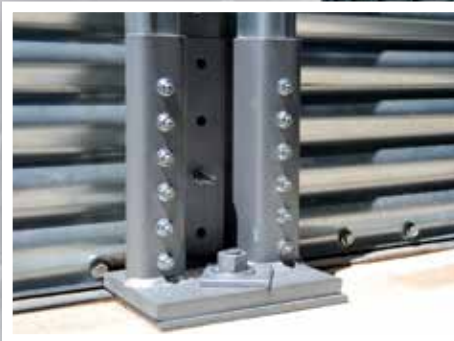
All GSI bins are constructed using the highest-strength steel available. Sidewall sheets are made from high-tensile steel that is rated up to 70,000 psi (450 MPa) minimum.

A commercial G-90, galvanized steel coating increases life and durability.



STIFFENERS

GSI's stiffener profiles and the use of up to 2-gauge material make bins stronger, allowing 40-Series bins to go taller without the extensive use of lamination. Improved stiffener profile design is manufactured on precision roll-forming equipment for superior quality. Base stiffener boots are powder-coated so they won't rust over time.



FEATURES



WIND RING

Redesigned wind ring and wind ring brackets reduce bolt holes in stiffeners, resulting in increased load capacity. Swaged, bolted splice ensure your 40-Series bins will stand up to the toughest wind conditions.



JS500 BOLTS

GSI uses JS500 bolts paired with sealing washers to protect the grain. JJS500 coated hardware provides added protection from rust, promoting longer bin life.



BASE ANGLE

Rolled structural base angle prevents water from entering at the base of the bin for improved protection.



BIN ROOF

40-SERIES GRAIN BINS

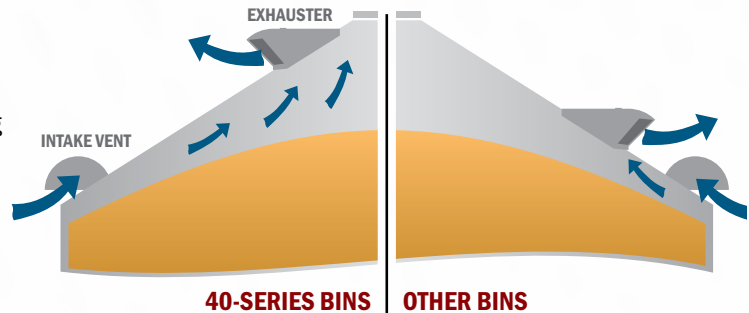
Z-TEK™ ROOF SYSTEM

GSI's 40-Series™ line of grain storage bins feature the precision-engineered Z-Tek™ Roof System. Designed for increased load capacity, the system incorporates z-shaped rafters and purlins, clips, peak ring, flat top and roof panel for unsurpassed strength and protection.

GSI EXCLUSIVE

ROOF EXHAUSTER MOUNTING LOCATION

Moving air in and out of the bin efficiently is essential. The 40-Series bin features new roof exhauster mounting plates near the peak for improved air flow by providing optimal separation of the intake vents and the exhausters. This allows for headspace air to be completely turned over and to minimize condensation on the bottom of the roof panels in colder climates.



ROOF VENTS

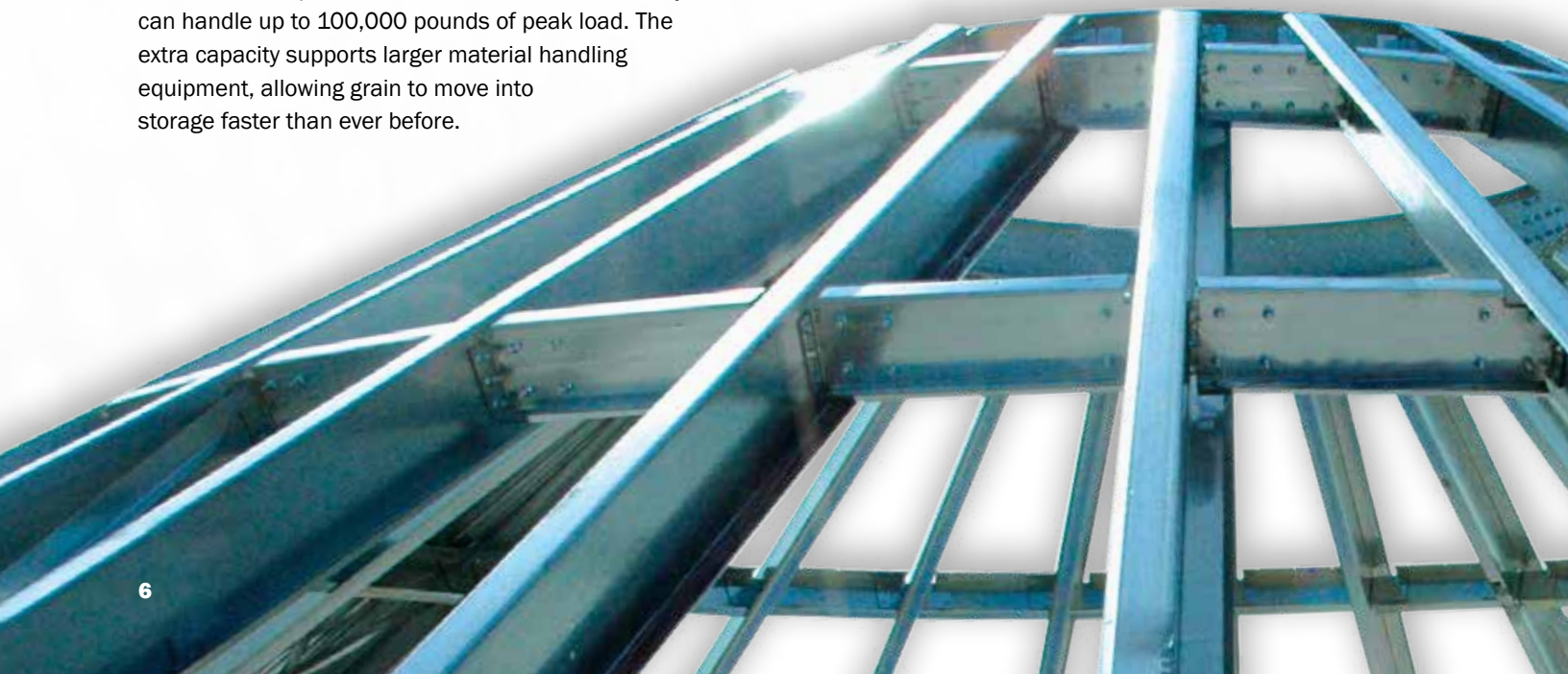
Redesigned roof vents promote increased airflow for improved performance. Vents feature a two-piece steel design with an optional cricket. Roof vents are available in grill vent and auto vent.

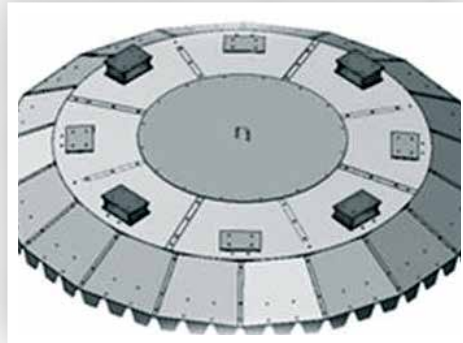
INCREASE SNOW LOAD CAPACITY

You can rest assured knowing that your grain is protected and dry from the elements in a GSI grain bin. GSI 40-Series bins can handle even the harshest of winter seasons with increased snow load capacity.

ADDED PEAK LOAD CAPACITY

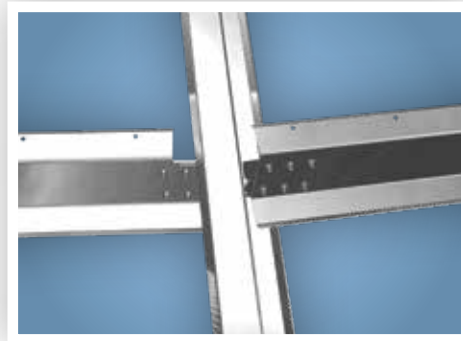
The roll formed precision manufactured Z-Tek Roof System can handle up to 100,000 pounds of peak load. The extra capacity supports larger material handling equipment, allowing grain to move into storage faster than ever before.





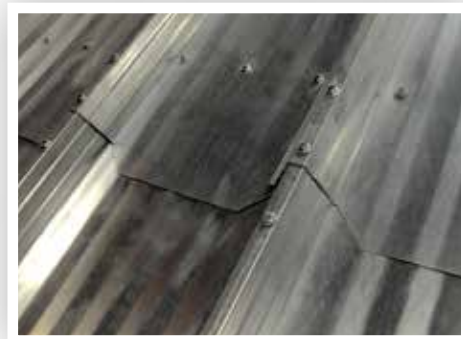
FLAT TOP

With the increasing speed of harvest, the size and capacities of material handling equipment continue to increase, leading to the need for larger flat tops on which to land equipment. Integrated attachment points within the flat top eliminate guesswork on where to attach material handling equipment for more accurate assembly. An optional integrated peak walk-around is available on bins larger than 54' diameter.



PURLINS

All purlins are designed as compression purlins for even distribution of the roof load. The Z-Tek Roof System delivers an increase in peak and snow load capacities as well as a simplified design for faster installation. GSI purlins are manufactured using the latest roll-form technology to ensure the most accurate fit possible.



ROOF SHEET OVERLAP

GSI's in-plane roof lap is designed to stop leaking by eliminating the flashing that is required between the upper and lower panels. Single sheet roofs are standard for all bins up to 78' diameter. From single-sheet roofs to an overlapped panel design, your crop is protected.



TEMPERATURE CABLE BRACKETS

GSI's Z-Tek Roof System temperature cable attachment brackets are standard for all bins 54' and larger. Temperature cables can be used on bins 48' and smaller with the optional addition of support brackets. The center collar includes an attachment point for the center cable so it's ready to expand with you when you choose.

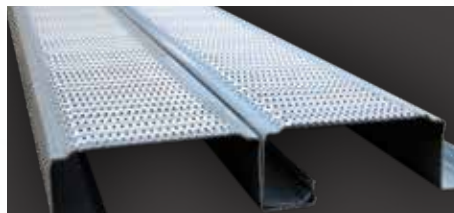
BIN FLOORS



GSI offers a wide range of floor designs to meet your specific grain type or aeration requirements. All floor parts are galvanized for lasting durability and feature a unique locking system that reduces floor movement and supports extreme load conditions.

DURA-LOK FLOORING

Easy to sweep and clean, Dura-Lok floor is the strongest floor available, making it ideal for tall bins. Supported by a post and beam system, the Dura-Lok floor features 3.5" wide sections for a more stable floor. A small grain option is also available.



STRONGEST

CUT-LOK FLOORING

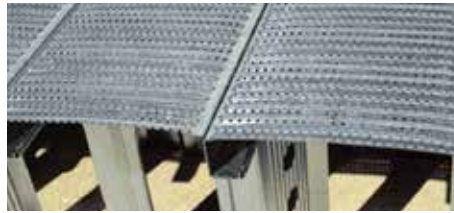
An economical option, the Cut-Lok steel floor is efficiently designed with a 12% opening that prevents any restriction to air flow.



STRONGER

COR-LOK FLOORING

Available in 18 gauge, the Cor-Lok floor features a 12% open round-hole perforation.



STRONG



MONO-RAIL FLOOR SUPPORTS

Dura-Lok flooring sits on our commercial grade Mono-Rail support system.



GSI GRANDSTAND® LOCKING TAB SUPPORTS

Cut-Lok and Cor-Lok sit on Grandstand supports. Locking tabs attach supports to flooring, preventing movement during install.



FLOOR SUPPORTS

For increased airflow, floor supports provide the perfect solution featuring a reduced air deflection design and easy assembly.

AERATION & CONDITIONING SYSTEMS

Maintaining consistent grain quality is essential to long-term profitability and viability. GSI manufactures a complete line of aeration and grain-conditioning systems to help maintain grain quality in any operation.

Having the right size of fan and drying system for your specific operation is key. Too much airflow can be as bad – sometimes even worse – than too little airflow. Our network of experienced dealers is the most knowledgeable in the field to ensure you equip your bin with the aeration and conditioning system that matches your specific requirements.

From high efficiency vane axial fans to a variety of centrifugal fans to heaters, talk with your GSI dealer to find the best match to reduce costs and boost performance.



	AXIAL	CENTRIFUGAL	INLINE CENTRIFUGAL	HIGH SPEED CENTRIFUGAL
HORSEPOWER	1 - 15	5 - 50	1.5 - 15	3 - 50
APPLICATION	Aeration, Drying	Aeration, Drying	Aeration	Aeration
NOISE				
COST	\$	\$ \$	\$ \$ \$	\$ \$ \$
HEATER AVAILABLE	✓	✓	Not Applicable	Not Applicable

OPTIONS

40-SERIES GRAIN BINS

UNLOAD SYSTEMS

We offer a full line of bin-unloading solutions with horizontal, 25 degree, and vertical discharge options.



COMPLETELY REDESIGNED DIRECT GEAR DRIVE SWEEPS

Re-engineered Direct Gear Drive Power Sweeps feature new center and intermediate well designs, heavy-duty gearboxes, single piece backshield assembly and redesigned end-wheel. With fewer moving parts, GSI Direct Gear Drive Power Sweeps are now more durable, reliable and easier to maintain than ever. Direct gear drive power sweeps are available in 8" (up to 48' diameter bins) and 10" (24' to 72') models, and are permanently installed and ready to start up with the flip of a switch.

U-TROUGH

A 10" U-Trough comes standard with an integrated power sweep and moves 5,000-6,000 BPH. Available for bins up to 66' diameter, the U-Trough fits under a standard 12" floor as well as most other aeration floors.

VERSALOOP™

If you are looking for an easy-to-operate versatile piece of equipment for your farm system, invest in a VersaLoop round tube chain conveyor. VersaLoop will improve your farm storage system from top to bottom and speed up your grain handling process. With many inlet and discharge options, VersaLoop can be used in several key functions across your grain system making grain movement easier than ever. VersaLoop is available in 8" (up to 4,000 BPH), 10" (up to 6,000 BPH) and 12" (up to 10,000 BPH) models.



40-SERIES GRAIN BINS

Your safety is a top priority. Durable and weather-resistant GSI stairs, ladders, cages, platforms, sidewall doors, steps and roof caps are designed to provide safe, convenient access points.

GSI GRAIN BIN STAIRS

GSI's new line of sidewall stairs, roof stairs and platforms are strong, comfortable and easy to climb, allowing you to get to the top quickly and safely.



SIDEWALL STAIRS

2-piece step design - the strength of two steps in one. Step height designed for comfortable rise/step combination.

Pre-rolled, 1.5" round tube, smooth handrails. Optional inside handrail for increased safety and ease of climbing.

Stairs can be wrapped clockwise or counterclockwise.



PLATFORMS

Three options for platform placement with single or double platform options.

High - located above the eave.

Low - located below the eave.

High/Low - combines a low platform in front of manway hole and a high platform to step onto roof (available on bins 60' and smaller - 3 panel roofs only).



ROOF STAIRS

Roof stairs allow for a safe and easy transition from platform to roof.

Comes in three sections to cover all roof combinations (3-step section, 4-step section, 8-step section)

Designed to clear potential interference with roof rings and other objects.



STURDY BIN LADDERS

GSI high-strength ladders have roll-formed sides and stamped rungs to eliminate rung spin. Quick assembly sections are available in 48" lengths and feature dimpled rungs for a better grip. GSI's ladder cages are completely galvanized and bolt directly to the prepunched sidewall ladders.

Also available are optional X-Series ladders, designed to meet OSHA specifications. Designed with step-through platforms, X-Series ladders are mounted 90 degrees to the sidewall to eliminate toe hazards such as stiffeners, wind rings and other bracketry.



WALK-THROUGH BIN DOORS

Walk-through doors are standard on all 40-Series™ grain bins. The outer door cover swings completely with the door cover hold-back and closes tightly with an exclusive weather seal, keeping water and pests out, and your protected grain in.

All inner door panels on GSI's walk-through door open completely. There are no horizontal bars or braces to unbolt or remove. To counteract friction set from grain loads, the specially designed lever latch multiplies the inner door opening force by 20 times, so opening is quick and easy. No wrenches or tools are required to operate.

UNSTIFFENED BINS - 2.66" CORRUGATION

4002

KEY FEATURES

DIAMETERS	15' - 48'
PEAK LOAD (lbs.)	6,000
SNOW LOAD	30 psf
DOME CAP	Standard
FLAT TOP	Optional
DOOR	2-Ring Door Standard
TEMP CABLE BRACKETS	Optional 24' - 48'

In 1972, the first GSI bin featured a 2.66" corrugation, unstiffened bin design. This proven design has continued to evolve and grow for today's operations.

With the original 2.66" corrugation profile, the 4002 is the perfect bin to maintain a historic look and consistent bin height on your farm.



4002 SPECIFICATIONS

40-SERIES GRAIN BINS

◀ 4002 - 15'-30' DIAMETERS ON PAGE 13

DIAMETER (FEET)	RING	MAXIMUM CAPACITY (BUSHELS) 12' PLENUM	EAVE HEIGHT (FEET)	PEAK HEIGHT (FEET)	CAPACITY (CUBIC FEET)	METRIC TONS 800 KG/M ³	METRIC TONS 721 KG/M ³	METRIC TONS 640 KG/M ³	EAVE HEIGHT (METERS)	PEAK HEIGHT (METERS)	MAXIMUM CAP. (CUBIC METERS)
33	5	11,056	13'6"	23'0"	13,809	332	299	265	4.09	7.01	391
	6	12,979	16'2"	25'8"	16,065	386	348	309	4.93	7.85	455
	7	14,902	18'10"	28'4"	18,322	440	397	352	5.74	8.66	519
	8	16,825	21'6"	30'0"	20,579	494	445	395	6.55	9.47	583
	9	18,748	24'2"	33'8"	22,836	548	494	439	7.37	10.29	647
	10	20,671	26'10"	36'4"	25,092	603	543	482	8.15	11.07	711
	11	22,594	29'6"	39'0"	27,349	657	592	525	8.99	11.91	774
	12	24,517	32'2"	41'8"	29,606	711	641	568	9.80	12.72	837
	13	26,440	34'10"	44'4"	31,863	765	690	611	10.62	13.54	900
	14	28,363	37'6"	47'0"	34,120	819	739	654	11.43	14.35	963
	15	30,286	40'2"	49'8"	36,377	873	788	697	12.24	15.16	1,026
36	5	13,381	13'6"	23'11"	16,700	401	361	321	4.09	7.27	473
	6	15,670	16'2"	26'7"	19,385	465	420	372	4.93	8.11	549
	7	17,959	18'10"	29'3"	22,071	530	478	424	5.74	8.92	625
	8	20,248	21'6"	31'11"	24,757	594	536	476	6.55	9.73	701
	9	22,537	24'2"	34'7"	27,443	659	594	527	7.37	10.55	777
	10	24,826	26'10"	37'3"	30,128	723	652	579	8.15	11.33	853
	11	27,115	29'6"	39'11"	32,814	788	710	630	8.99	12.17	929
	12	29,404	32'2"	42'7"	35,500	852	768	682	9.80	12.98	1,005
	13	31,693	34'10"	45'3"	38,186	917	826	734	10.62	13.80	1,081
	14	33,981	37'6"	47'11"	40,871	981	885	785	11.43	14.61	1,157
	15	36,270	40'2"	50'7"	43,557	1,046	943	837	12.24	15.42	1,233
42	6	21,950	16'2"	28'4"	27,111	651	587	521	4.93	8.62	768
	7	25,065	18'10"	31'0"	30,766	739	666	591	5.74	9.43	871
	8	28,180	21'6"	33'8"	34,422	827	745	661	6.55	10.24	975
	9	31,295	24'2"	36'4"	38,077	914	824	731	7.37	11.06	1,078
	10	34,410	26'10"	39'0"	41,733	1,002	903	802	8.15	11.87	1,182
	11	37,525	29'6"	41'8"	45,389	1,090	982	872	8.99	12.68	1,285
	12	40,640	32'2"	44'4"	49,044	1,178	1,061	942	9.80	13.49	1,389
	13	43,755	34'10"	47'0"	52,700	1,265	1,140	1,012	10.62	14.31	1,492
	14	46,870	37'6"	49'8"	56,355	1,353	1,220	1,083	11.43	15.12	1,596
	15	49,985	40'2"	52'4"	60,011	1,441	1,299	1,153	12.24	15.93	1,699
48	6	29,480	16'2"	30'1"	36,357	873	787	698	4.93	9.15	1,030
	7	33,548	18'10"	32'9"	41,132	988	890	790	5.74	9.97	1,165
	8	37,616	21'6"	35'5"	45,906	1,102	993	882	6.55	10.78	1,300
	9	41,684	24'2"	38'1"	50,681	1,217	1,097	974	7.37	11.59	1,435
	10	45,752	26'10"	40'9"	55,455	1,332	1,200	1,065	8.15	12.40	1,570
	11	49,820	29'6"	43'5"	60,230	1,446	1,303	1,157	8.99	13.22	1,706
	12	53,888	32'2"	46'1"	65,005	1,561	1,407	1,249	9.80	14.03	1,841
	13	57,957	34'10"	48'9"	69,779	1,676	1,510	1,341	10.62	14.84	1,976
	14	62,025	37'6"	51'5"	74,554	1,790	1,613	1,432	11.43	15.66	2,111

- All bins are designed for the storage of grain and other free-flowing materials weighing up to 52 lbs. per cubic foot.
- Max. cubic feet and cubic meters based on 28° angle of repose.
- Max. bushels and metric tons based on 28 degree angle of repose and 6% compaction factor.
- Peak heights shown for 30 degree slope roofs.

- Typical grain densities are as follows:
 - Wheat approximately 800 kg/m³ (50 lb/ft³)
 - Corn approximately 721 kg/m³ (45 lb/ft³)
 - Rice approximately 640 kg/m³ (40 lb/ft³).
- Other rings heights available in some diameters, contact your dealer for details.



UNSTIFFENED BINS - 4" CORRUGATION

4004



KEY FEATURES

DIAMETERS	15' - 48'
PEAK LOAD (lbs.)	6,000
SNOW LOAD	30 psf
DOME CAP	Standard
FLAT TOP	Optional
DOOR	2-Ring Door Standard
TEMP CABLE BRACKETS	Optional 24' - 48'

Popular with farmers across America, the 4004 is built on the legacy of the 4002 bin, with 4" wide corrugation, and is available in diameters ranging from 15' to 48' and 3 to 10 rings tall. Capacities range from 1,677 to 60,000 bushels.

4004 SPECIFICATIONS

40-SERIES GRAIN BINS

DIAMETER (FEET)	RING	MAXIMUM CAPACITY (BUSHEL) 12' PLENUM	EAVE HEIGHT (FEET)	PEAK HEIGHT (FEET)	CAPACITY (CUBIC FEET)	METRIC TONS 800 KG/M ³	METRIC TONS 721 KG/M ³	METRIC TONS 640 KG/M ³	EAVE HEIGHT (METERS)	PEAK HEIGHT (METERS)	MAXIMUM CAP. (CUBIC METERS)
15	3	1,698	11'1"	15'5"	2,168	52	47	42	3.38	4.69	61
	4	2,244	14'9"	19'1"	2,809	67	61	54	4.50	5.82	80
	5	2,791	18'5"	22'9"	3,450	83	75	66	5.61	6.95	98
	6	3,338	22'1"	26'5"	4,091	98	89	79	6.73	8.08	116
	7	3,883	25'9"	30'1"	4,732	114	102	91	7.85	9.21	134
	8	4,429	29'5"	33'9"	5,373	129	116	103	8.97	10.34	152
18	3	2,502	11'1"	16'3"	3,188	77	69	61	3.38	4.95	90
	4	3,288	14'9"	19'11"	4,111	99	89	79	4.50	6.07	116
	5	4,075	18'5"	23'7"	5,034	121	109	97	5.61	7.19	143
	6	4,862	22'1"	27'3"	5,958	143	129	114	6.73	8.31	169
	7	5,648	25'9"	30'11"	6,881	165	149	132	7.85	9.43	195
	8	6,435	29'5"	34'7"	7,804	187	169	150	8.97	10.55	221
21	3	3,482	11'1"	17'2"	4,430	106	96	85	3.38	5.23	125
	4	4,553	14'9"	20'10"	5,686	137	123	109	4.50	6.35	161
	5	5,624	18'5"	24'6"	6,943	167	150	133	5.61	7.47	197
	6	6,695	22'1"	28'2"	8,200	197	177	158	6.73	8.59	232
	7	7,765	25'9"	31'10"	9,456	227	205	182	7.85	9.71	268
	8	8,836	29'5"	35'6"	10,713	257	232	206	8.97	10.83	303
24	3	4,649	11'1"	18'0"	5,904	142	128	113	3.38	5.48	167
	4	6,048	14'9"	21'8"	7,545	181	163	145	4.50	6.60	214
	5	7,446	18'5"	25'4"	9,187	221	199	176	5.61	7.72	260
	6	8,845	22'1"	29'0"	10,828	260	234	208	6.73	8.84	307
	7	10,244	25'9"	32'8"	12,469	299	270	240	7.85	9.96	353
	8	11,642	29'5"	36'4"	14,111	339	305	271	8.97	11.08	400
27	3	6,012	11'1"	18'11"	7,622	183	165	146	3.38	5.66	216
	4	7,782	14'9"	22'7"	9,699	233	210	186	4.50	6.78	275
	5	9,552	18'5"	26'3"	11,777	283	255	226	5.61	7.90	333
	6	11,322	22'1"	29'11"	13,854	333	300	266	6.73	9.01	392
	7	13,092	25'9"	33'7"	15,931	383	345	306	7.85	10.14	451
	8	14,862	29'5"	37'3"	18,008	432	390	346	8.97	11.25	510
30	4	9,765	14'9"	23'6"	12,160	292	263	234	4.50	7.16	344
	5	11,950	18'5"	27'2"	14,724	354	319	283	5.61	8.27	417
	6	14,135	22'1"	30'10"	17,289	415	374	332	6.73	9.38	490
	7	16,321	25'9"	34'6"	19,853	477	430	381	7.85	10.49	562
	8	18,506	29'5"	38'2"	22,418	538	485	431	8.97	11.60	635
	9	20,691	33'1"	41'10"	24,982	600	541	480	10.08	12.71	707
33	4	12,006	14'9"	24'4"	14,937	359	323	287	4.50	7.42	423
	5	14,651	18'5"	28'0"	18,040	433	390	347	5.61	8.55	511
	6	17,295	22'1"	31'8"	21,143	508	458	406	6.73	9.68	599
	7	19,939	25'9"	35'4"	24,246	582	525	466	7.85	10.81	687
	8	22,583	29'5"	39'0"	27,349	657	592	525	8.97	11.94	774
	9	25,227	33'1"	42'8"	30,452	731	659	585	10.08	13.07	862



4004 SPECIFICATIONS

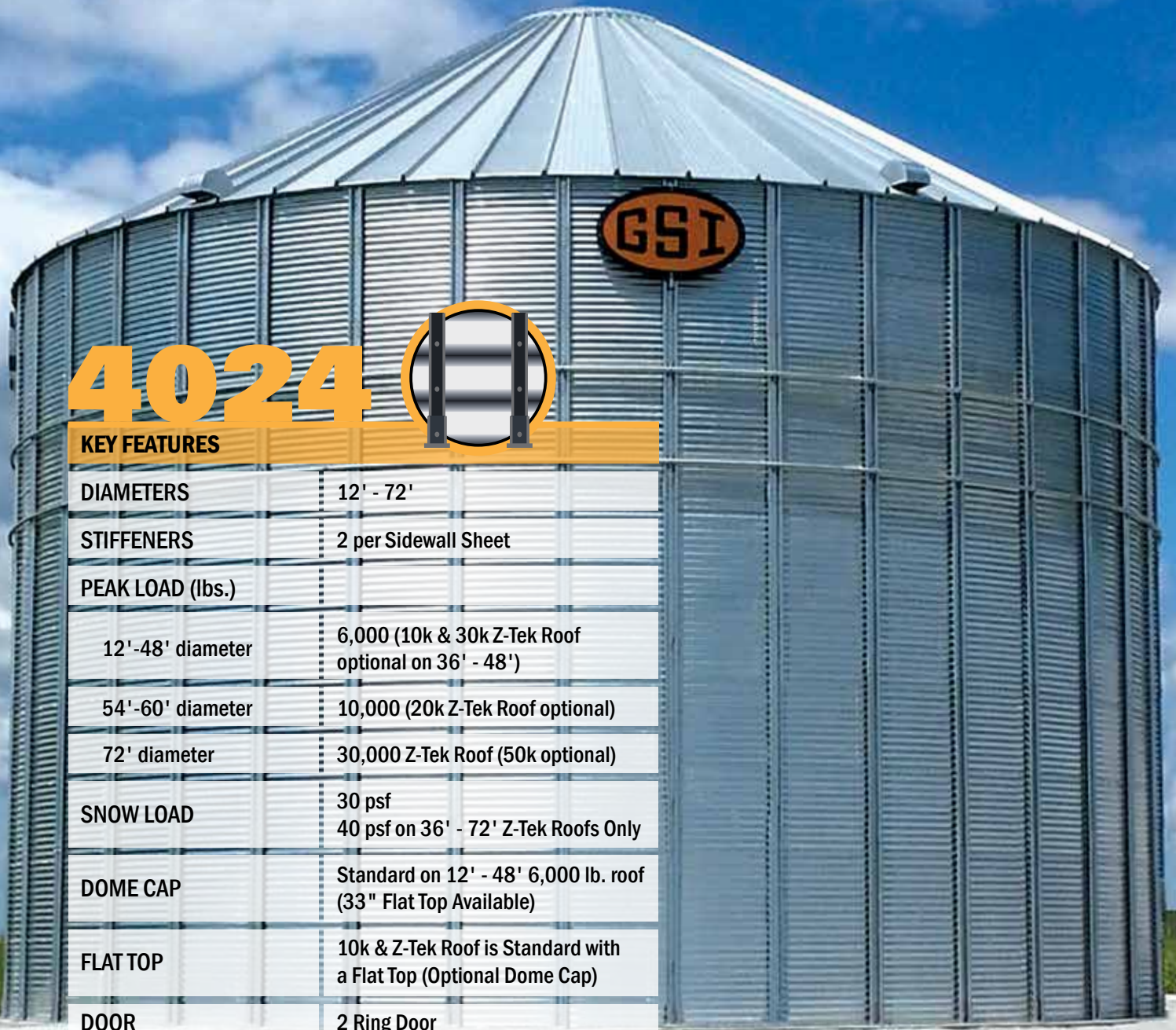
40-SERIES GRAIN BINS

DIAMETER (FEET)	RING	MAXIMUM CAPACITY (BUSHELS) 12" PLENUM	EAVE HEIGHT (FEET)	PEAK HEIGHT (FEET)	CAPACITY (CUBIC FEET)	METRIC TONS 800 KG/M ³	METRIC TONS 721 KG/M ³	METRIC TONS 640 KG/M ³	EAVE HEIGHT (METERS)	PEAK HEIGHT (METERS)	MAXIMUM CAP. (CUBIC METERS)
36	4	14,516	14'9"	25'3"	18,043	433	390	347	4.50	7.67	511
	5	17,662	18'5"	28'11"	21,735	522	470	418	5.61	8.79	615
	6	20,809	22'1"	32'7"	25,428	611	550	488	6.73	9.91	720
	7	23,956	25'9"	36'3"	29,121	699	630	559	7.85	11.02	825
	8	27,102	29'5"	39'11"	32,814	788	710	630	8.97	12.14	929
	9	30,249	33'1"	43'7"	36,507	877	790	701	10.08	13.26	1,034
	10	33,396	36'9"	47'3"	40,200	965	870	772	11.20	14.38	1,138
42	4	20,375	14'9"	27'0"	25,283	607	547	486	4.50	8.20	716
	5	24,658	18'5"	30'8"	30,309	728	656	582	5.61	9.32	858
	6	28,941	22'1"	34'4"	35,336	848	765	679	6.73	10.44	1,001
	7	33,224	25'9"	38'0"	40,362	969	873	775	7.85	11.56	1,143
	8	37,507	29'5"	41'8"	45,389	1,090	982	872	8.97	12.68	1,285
	9	41,790	33'1"	45'4"	50,415	1,211	1,091	969	10.08	13.80	1,428
	10	46,073	36'9"	49'0"	55,441	1,331	1,200	1,065	11.20	14.92	1,570
48	4	27,419	14'9"	28'9"	33,970	816	735	653	4.50	8.76	962
	5	33,014	18'5"	32'5"	40,535	973	877	779	5.61	9.88	1,148
	6	38,608	22'1"	36'1"	47,100	1,131	1,019	905	6.73	11.00	1,334
	7	44,202	25'9"	39'9"	53,665	1,289	1,161	1,031	7.85	12.12	1,520
	8	49,796	29'5"	43'5"	60,230	1,446	1,303	1,157	8.97	13.24	1,706
	9	55,339	33'1"	47'1"	66,795	1,604	1,446	1,283	10.08	14.36	1,891
	10	60,984	36'9"	50'9"	73,360	1,761	1,588	1,409	11.20	15.48	2,077

- All bins are designed for the storage of grain and other free-flowing materials weighing up to 52 lbs. per cubic foot.
- Max. cubic feet and cubic meters based on 28° angle of repose.
- Max. bushels and metric tons based on 28 degree angle of repose and 6% compaction factor.
- Peak heights shown for 30 degree slope roofs.

- Typical grain densities are as follows:
 - Wheat approximately 800 kg/m³ (50 lb/ft³)
 - Corn approximately 721 kg/m³ (45 lb/ft³)
 - Rice approximately 640 kg/m³ (40 lb/ft³).
- Other rings heights available in some diameters, contact your dealer for details.

STIFFENED BINS - 4" CORRUGATION



KEY FEATURES	
DIAMETERS	12' - 72'
STIFFENERS	2 per Sidewall Sheet
PEAK LOAD (lbs.)	
12'-48' diameter	6,000 (10k & 30k Z-Tek Roof optional on 36' - 48')
54'-60' diameter	10,000 (20k Z-Tek Roof optional)
72' diameter	30,000 Z-Tek Roof (50k optional)
SNOW LOAD	30 psf 40 psf on 36' - 72' Z-Tek Roofs Only
DOME CAP	Standard on 12' - 48' 6,000 lb. roof (33" Flat Top Available)
FLAT TOP	10k & Z-Tek Roof is Standard with a Flat Top (Optional Dome Cap)
DOOR	2 Ring Door
TEMP CABLE BRACKETS	Standard 54' - 72' Z-Tek Optional 24' - 48', 54' - 60' 10k only

GSI stiffened bins use vertical stiffeners to channel the load of the bin to the foundation more effectively. The 4024 grain bin will match the corrugation of your other farm bins while adding storage capacity never seen before in a GSI 4" bin. If you have limited space available, the 4024 can be built up to 21 rings tall so you won't lose needed capacity with a smaller diameter. With the option of a 72' diameter, the 4024 is designed to expand as your operation grows.

4024 SPECIFICATIONS

40-SERIES GRAIN BINS

DIAMETER (FEET)	RING	MAXIMUM CAPACITY (BUSHELS) 12' PLENUM	EAVE HEIGHT (FEET)	PEAK HEIGHT (FEET)	CAPACITY (CUBIC FEET)	METRIC TONS 800 KG/M ³	METRIC TONS 721 KG/M ³	METRIC TONS 640 KG/M ³	EAVE HEIGHT (METERS)	PEAK HEIGHT (METERS)	MAXIMUM CAP. (CUBIC METERS)
12	3	1,061	11'1"	14'7"	1,358	33	29	26	3.38	4.45	38
	4	1,411	14'9"	18'3"	1,768	42	38	34	4.50	5.56	50
	5	1,761	18'5"	21'11"	2,178	52	47	42	5.61	6.68	62
	6	2,110	22'1"	25'7"	2,589	62	56	50	6.73	7.79	73
	7	2,460	25'9"	29'3"	2,999	72	65	58	7.85	8.91	85
	8	2,810	29'5"	32'11"	3,409	82	74	65	8.97	10.03	97
	9	3,159	33'1"	36'7"	3,820	92	83	73	10.08	11.15	108
	10	3,509	36'9"	40'3"	4,230	102	92	81	11.20	12.26	120
	11	3,859	40'5"	43'11"	4,640	111	100	89	12.32	13.68	131
	12	4,208	44'1"	47'7"	5,051	121	109	97	13.44	14.50	143
13	4,558	47'9"	51'3"	5,461	131	118	105	14.55	15.62	155	
15	3	1,698	11'1"	15'5"	2,168	52	47	42	3.38	4.69	61
	4	2,244	14'9"	19'1"	2,809	67	61	54	4.50	5.82	80
	5	2,791	18'5"	22'9"	3,450	83	75	66	5.61	6.95	98
	6	3,338	22'1"	26'5"	4,091	98	89	79	6.73	8.08	116
	7	3,883	25'9"	30'1"	4,732	114	102	91	7.85	9.21	134
	8	4,429	29'5"	33'9"	5,373	129	116	103	8.97	10.34	152
	9	4,976	33'1"	37'5"	6,014	144	130	116	10.08	11.47	170
	10	5,522	36'9"	41'1"	6,655	160	144	128	11.20	12.60	188
	11	6,068	40'5"	44'9"	7,297	175	158	140	12.32	13.73	207
	12	6,615	44'1"	48'5"	7,938	191	172	152	13.44	14.86	225
13	7,161	47'9"	52'1"	8,579	206	186	165	14.55	15.99	243	
18	3	2,502	11'1"	16'3"	3,188	77	69	61	3.38	4.95	90
	4	3,288	14'9"	19'11"	4,111	99	89	79	4.50	6.07	116
	5	4,075	18'5"	23'7"	5,034	121	109	97	5.61	7.19	143
	6	4,862	22'1"	27'3"	5,958	143	129	114	6.73	8.31	169
	7	5,648	25'9"	30'11"	6,881	165	149	132	7.85	9.43	195
	8	6,435	29'5"	34'7"	7,804	187	169	150	8.97	10.55	221
	9	7,222	33'1"	38'3"	8,727	210	189	168	10.08	11.67	247
	10	8,009	36'9"	41'11"	9,650	232	209	185	11.20	12.79	273
	11	8,795	40'5"	45'7"	10,574	254	229	203	12.32	13.91	299
	12	9,582	44'1"	49'3"	11,497	276	249	221	13.44	15.03	326
13	10,369	47'9"	52'11"	12,420	298	269	239	14.55	16.15	352	
21	3	3,482	11'1"	17'2"	4,430	106	96	85	3.38	5.23	125
	4	4,553	14'9"	20'10"	5,686	137	123	109	4.50	6.35	161
	5	5,624	18'5"	24'6"	6,943	167	150	133	5.61	7.47	197
	6	6,695	22'1"	28'2"	8,200	197	177	158	6.73	8.59	232
	7	7,765	25'9"	31'10"	9,456	227	205	182	7.85	9.71	268
	8	8,836	29'5"	35'6"	10,713	257	232	206	8.97	10.83	303
	9	9,907	33'1"	39'2"	11,969	287	259	230	10.08	11.95	339
	10	10,978	36'9"	42'10"	13,226	318	286	254	11.20	13.07	375
	11	12,048	40'5"	46'6"	14,483	348	313	278	12.32	14.19	410
	12	13,119	44'1"	50'2"	15,739	378	341	302	13.44	15.31	446
13	14,190	47'9"	53'10"	16,996	408	368	327	14.55	16.43	481	
24	3	4,649	11'1"	18'0"	5,904	142	128	113	3.38	5.48	167
	4	6,048	14'9"	21'8"	7,545	181	163	145	4.50	6.60	214
	5	7,446	18'5"	25'4"	9,187	221	199	176	5.61	7.72	260
	6	8,845	22'1"	29'0"	10,828	260	234	208	6.73	8.84	307
	7	10,244	25'9"	32'8"	12,469	299	270	240	7.85	9.96	353
	8	11,642	29'5"	36'4"	14,111	339	305	271	8.97	11.08	400
	9	13,041	33'1"	40'0"	15,752	378	341	303	10.08	12.20	446
	10	14,439	36'9"	43'8"	17,393	418	376	334	11.20	13.32	493
	11	15,838	40'5"	47'4"	19,034	457	412	366	12.32	14.44	539
	12	17,236	44'1"	51'0"	20,676	496	447	397	13.44	15.56	585
13	18,635	47'9"	54'8"	22,317	536	483	429	14.55	16.68	632	

4024 - 27'-48' DIAMETERS CONTINUED ON PAGE 20-21 ►

4024 SPECIFICATIONS

40-SERIES GRAIN BINS

◀ 4024 - 12'-24' DIAMETERS ON PAGE 19

DIAMETER (FEET)	RING	MAXIMUM CAPACITY (BUSHELS) 12' PLENUM	EAVE HEIGHT (FEET)	PEAK HEIGHT (FEET)	CAPACITY (CUBIC FEET)	METRIC TONS 800 KG/M ³	METRIC TONS 721 KG/M ³	METRIC TONS 640 KG/M ³	EAVE HEIGHT (METERS)	PEAK HEIGHT (METERS)	MAXIMUM CAP. (CUBIC METERS)
27	3	6,012	11'1"	18'11"	7,622	183	165	146	3.38	5.66	216
	4	7,782	14'9"	22'7"	9,699	233	210	186	4.50	6.78	275
	5	9,552	18'5"	26'3"	11,777	283	255	226	5.61	7.90	333
	6	11,322	22'1"	29'11"	13,854	333	300	266	6.73	9.01	392
	7	13,092	25'9"	33'7"	15,931	383	345	306	7.85	10.14	451
	8	14,862	29'5"	37'3"	18,008	432	390	346	8.97	11.25	510
	9	16,632	33'1"	40'11"	20,086	482	435	386	10.08	12.37	569
	10	18,402	36'9"	44'7"	22,163	532	480	426	11.20	13.49	628
	11	20,172	40'5"	48'3"	24,240	582	525	466	12.32	14.61	686
	12	21,942	44'1"	51'11"	26,317	632	570	506	13.44	15.72	745
13	23,712	47'9"	55'7"	28,395	682	614	545	14.55	16.87	804	
30	3	7,580	11'1"	19'10"	9,595	230	208	184	3.38	6.05	272
	4	9,765	14'9"	23'6"	12,160	292	263	234	4.50	7.16	344
	5	11,950	18'5"	27'2"	14,724	354	319	283	5.61	8.27	417
	6	14,135	22'1"	30'10"	17,289	415	374	332	6.73	9.38	490
	7	16,321	25'9"	34'6"	19,853	477	430	381	7.85	10.49	562
	8	18,506	29'5"	38'2"	22,418	538	485	431	8.97	11.60	635
	9	20,691	33'1"	41'10"	24,982	600	541	480	10.08	12.71	707
	10	22,876	36'9"	45'6"	27,547	661	596	529	11.20	13.82	780
	11	25,061	40'5"	49'2"	30,111	723	652	578	12.32	14.93	853
	12	27,247	44'1"	52'10"	32,676	785	707	628	13.44	16.04	925
	13	29,432	47'9"	56'6"	35,240	846	763	677	14.56	17.15	998
	14	31,617	51'5"	60'2"	37,805	908	818	726	15.68	18.26	1,071
	15	33,802	55'1"	63'10"	40,369	969	874	776	16.80	19.37	1,143
	16	35,987	58'9"	67'6"	42,934	1,031	929	825	17.92	20.48	1,216
	17	38,173	62'5"	71'2"	45,498	1,092	985	874	19.04	21.59	1,288
	18	40,358	66'1"	74'10"	48,063	1,154	1,040	923	20.16	22.70	1,361
	19	42,543	69'9"	78'6"	50,627	1,216	1,096	973	21.28	23.81	1,434
20	44,728	73'5"	82'2"	53,192	1,277	1,151	1,022	22.40	24.92	1,506	
21	46,913	77'1"	85'10"	55,756	1,339	1,207	1,071	23.52	26.03	1,579	
33	3	9,362	11'1"	20'8"	11,834	284	256	227	3.38	6.29	335
	4	12,006	14'9"	24'4"	14,937	359	323	287	4.50	7.42	423
	5	14,651	18'5"	28'0"	18,040	433	390	347	5.61	8.55	511
	6	17,295	22'1"	31'8"	21,143	508	458	406	6.73	9.68	599
	7	19,939	25'9"	35'4"	24,246	582	525	466	7.85	10.81	687
	8	22,583	29'5"	39'0"	27,349	657	592	525	8.97	11.94	774
	9	25,227	33'1"	42'8"	30,452	731	659	585	10.08	13.07	862
	10	27,871	36'9"	46'4"	33,555	806	726	645	11.20	14.20	950
	11	30,515	40'5"	50'0"	36,658	880	793	704	12.32	15.33	1,038
	12	33,159	44'1"	53'8"	39,761	955	860	764	13.44	16.46	1,126
	13	35,803	47'9"	57'4"	42,864	1,029	928	823	14.56	17.59	1,214
	14	38,447	51'5"	61'0"	45,967	1,104	995	883	15.68	18.72	1,302
	15	41,091	55'1"	64'8"	49,070	1,178	1,062	943	16.80	19.85	1,390
	16	43,735	58'9"	68'4"	52,174	1,253	1,129	1,002	17.92	20.98	1,477
	17	46,380	62'5"	72'0"	55,277	1,327	1,196	1,062	19.04	22.11	1,565
	18	49,024	66'1"	75'8"	58,380	1,402	1,263	1,122	20.16	23.24	1,653
	19	51,668	69'9"	79'4"	61,483	1,476	1,331	1,181	21.28	24.37	1,741
20	54,312	73'5"	83'0"	64,586	1,551	1,398	1,241	22.40	25.50	1,829	
21	56,956	77'1"	86'8"	67,689	1,625	1,465	1,300	23.52	26.63	1,917	



4024 SPECIFICATIONS

40-SERIES GRAIN BINS

DIAMETER (FEET)	RING	MAXIMUM CAPACITY (BUSHELS) 12' PLENUM	EAVE HEIGHT (FEET)	PEAK HEIGHT (FEET)	CAPACITY (CUBIC FEET)	METRIC TONS 800 KG/M ³	METRIC TONS 721 KG/M ³	METRIC TONS 640 KG/M ³	EAVE HEIGHT (METERS)	PEAK HEIGHT (METERS)	MAXIMUM CAP. (CUBIC METERS)
36	3	11,369	11'1"	21'7"	14,350	345	311	276	3.38	6.55	406
	4	14,516	14'9"	25'3"	18,043	433	390	347	4.50	7.67	511
	5	17,662	18'5"	28'11"	21,735	522	470	418	5.61	8.79	615
	6	20,809	22'1"	32'7"	25,428	611	550	488	6.73	9.91	720
	7	23,956	25'9"	36'3"	29,121	699	630	559	7.85	11.02	825
	8	27,102	29'5"	39'11"	32,814	788	710	630	8.97	12.14	929
	9	30,249	33'1"	43'7"	36,507	877	790	701	10.08	13.26	1,034
	10	33,396	36'9"	47'3"	40,200	965	870	772	11.20	14.38	1,138
	11	36,542	40'5"	50'11"	43,893	1,054	950	843	12.32	15.49	1,243
	12	39,689	44'1"	54'7"	47,586	1,143	1,030	914	13.44	16.61	1,347
	13	42,836	47'9"	58'3"	51,279	1,231	1,110	985	14.56	17.73	1,452
	14	45,982	51'5"	61'11"	54,971	1,320	1,190	1,056	15.68	18.85	1,557
	15	49,129	55'1"	65'7"	58,664	1,409	1,270	1,127	16.80	19.96	1,661
	16	52,276	58'9"	69'3"	62,357	1,497	1,349	1,198	17.92	21.08	1,766
17	55,422	62'5"	72'11"	66,050	1,586	1,429	1,269	19.04	22.20	1,870	
18	58,569	66'1"	76'7"	69,743	1,675	1,509	1,340	20.16	23.32	1,975	
19	61,716	69'9"	80'3"	73,436	1,763	1,589	1,411	21.28	24.44	2,079	
20	64,862	73'5"	83'11"	77,129	1,852	1,669	1,482	22.40	25.56	2,184	
21	68,009	77'1"	87'7"	80,822	1,941	1,749	1,553	23.52	26.68	2,289	
42	3	16,092	11'1"	23'4"	20,256	486	438	389	3.38	7.10	574
	4	20,375	14'9"	27'0"	25,283	607	547	486	4.50	8.20	716
	5	24,658	18'5"	30'8"	30,309	728	656	582	5.61	9.32	858
	6	28,941	22'1"	34'4"	35,336	848	765	679	6.73	10.44	1,001
	7	33,224	25'9"	38'0"	40,362	969	873	775	7.85	11.56	1,143
	8	37,507	29'5"	41'8"	45,389	1,090	982	872	8.97	12.68	1,285
	9	41,790	33'1"	45'4"	50,415	1,211	1,091	969	10.08	13.80	1,428
	10	46,073	36'9"	49'0"	55,441	1,331	1,200	1,065	11.20	14.92	1,570
	11	50,356	40'5"	52'8"	60,468	1,452	1,309	1,162	12.32	16.04	1,712
	12	54,639	44'1"	56'4"	65,494	1,573	1,417	1,258	13.44	17.15	1,855
	13	58,922	47'9"	60'0"	70,521	1,693	1,526	1,355	14.56	18.27	1,997
	14	63,205	51'5"	62'8"	75,547	1,814	1,635	1,451	15.68	19.08	2,139
	15	67,488	55'1"	66'4"	80,574	1,935	1,744	1,548	16.79	20.20	2,282
	16	71,771	58'9"	70'0"	85,600	2,055	1,852	1,644	17.91	21.32	2,424
17	76,054	62'5"	73'8"	90,627	2,176	1,961	1,741	19.02	22.44	2,566	
18	80,337	66'1"	77'4"	95,653	2,297	2,070	1,838	20.14	23.55	2,709	
19	84,620	69'9"	81'0"	100,679	2,417	2,179	1,934	21.26	24.67	2,851	
20	88,903	73'5"	84'8"	105,706	2,538	2,288	2,031	22.38	25.79	2,993	
21	93,186	77'1"	88'4"	110,732	2,659	2,396	2,127	23.50	26.91	3,136	
48	3	21,825	11'1"	25'1"	27,404	658	593	526	3.39	7.64	776
	4	27,419	14'9"	28'9"	33,970	816	735	653	4.50	8.76	962
	5	33,014	18'5"	32'5"	40,535	973	877	779	5.61	9.88	1,148
	6	38,608	22'1"	36'1"	47,100	1,131	1,019	905	6.73	11.00	1,334
	7	44,202	25'9"	39'9"	53,665	1,289	1,161	1,031	7.85	12.12	1,520
	8	49,796	29'5"	43'5"	60,230	1,446	1,303	1,157	8.97	13.24	1,706
	9	55,390	33'1"	47'1"	66,795	1,604	1,446	1,283	10.08	14.36	1,891
	10	60,984	36'9"	50'9"	73,360	1,761	1,588	1,409	11.20	15.48	2,077
	11	66,578	40'5"	54'5"	79,925	1,919	1,730	1,535	12.32	16.57	2,263
	12	72,172	44'1"	58'1"	86,491	2,077	1,872	1,662	13.44	17.69	2,449
	13	77,766	47'9"	61'9"	93,056	2,234	2,014	1,788	14.56	18.81	2,635
	14	83,360	51'5"	64'5"	99,621	2,392	2,156	1,914	15.68	19.63	2,821
	15	88,954	55'1"	68'1"	106,186	2,550	2,298	2,040	16.79	20.74	3,007
	16	94,548	58'9"	71'9"	112,751	2,707	2,440	2,166	17.91	21.86	3,193
17	100,143	62'5"	75'5"	119,316	2,865	2,582	2,292	19.02	22.98	3,379	
18	105,737	66'1"	79'1"	125,881	3,023	2,724	2,418	20.14	24.10	3,565	
19	111,331	69'9"	82'9"	132,447	3,180	2,866	2,544	21.26	25.22	3,750	
20	116,925	73'5"	86'5"	139,012	3,338	3,008	2,671	22.38	26.33	3,936	
21	122,519	77'1"	90'1"	145,577	3,496	3,150	2,797	23.50	27.45	4,122	

4024 - 54'-72' DIAMETERS CONTINUED ON PAGE 22 ▶

4024 SPECIFICATIONS

40-SERIES GRAIN BINS

◀ 4024 - 27'-48' DIAMETERS ON PAGE 20-21

DIAMETER (FEET)	RING	MAXIMUM CAPACITY (BUSHELS) 12' PLENUM	EAVE HEIGHT (FEET)	PEAK HEIGHT (FEET)	CAPACITY (CUBIC FEET)	METRIC TONS 800 KG/M ³	METRIC TONS 721 KG/M ³	METRIC TONS 640 KG/M ³	EAVE HEIGHT (METERS)	PEAK HEIGHT (METERS)	MAXIMUM CAP. (CUBIC METERS)
54	3	28,644	11'1"	25'5"	35,882	862	777	689	3.39	7.74	1,016
	4	35,724	14'9"	29'1"	44,191	1,061	956	849	4.50	8.86	1,251
	5	42,804	18'5"	32'9"	52,500	1,261	1,136	1,009	5.61	9.98	1,487
	6	49,884	22'1"	36'5"	60,809	1,460	1,316	1,168	6.73	11.09	1,722
	7	56,964	25'9"	40'1"	69,118	1,660	1,496	1,328	7.85	12.21	1,957
	8	64,044	29'5"	43'9"	77,427	1,859	1,676	1,487	8.97	13.33	2,192
	9	71,124	33'1"	47'5"	85,736	2,059	1,855	1,647	10.08	14.45	2,428
	10	78,204	36'9"	51'1"	94,045	2,258	2,035	1,807	11.20	15.56	2,663
	11	85,284	40'5"	54'9"	102,354	2,458	2,215	1,966	12.32	16.68	2,898
	12	92,364	44'1"	58'5"	110,663	2,657	2,395	2,126	13.44	17.80	3,134
	13	99,444	47'9"	62'1"	118,972	2,857	2,575	2,286	14.56	18.92	3,369
	14	106,524	51'5"	65'9"	127,281	3,056	2,755	2,445	15.68	20.03	3,604
	15	113,604	55'1"	69'5"	135,590	3,256	2,934	2,605	16.81	21.15	3,839
	16	120,684	58'9"	73'1"	143,899	3,455	3,114	2,764	17.92	22.27	4,075
17	127,764	62'5"	76'9"	152,208	3,655	3,294	2,924	19.03	23.39	4,310	
18	134,844	66'1"	80'5"	160,517	3,854	3,474	3,084	20.14	24.50	4,545	
19	141,924	69'9"	84'1"	168,826	4,054	3,654	3,243	21.25	25.62	4,781	
20	149,004	73'5"	87'9"	177,135	4,253	3,833	3,403	22.36	26.74	5,016	
21	156,084	77'1"	91'5"	185,444	4,453	4,013	3,563	23.47	27.86	5,251	
60	3	36,624	11'1"	27'2"	45,779	1,099	991	879	3.39	8.28	1,296
	4	45,365	14'9"	30'10"	56,037	1,346	1,213	1,077	4.50	9.40	1,587
	5	54,105	18'5"	34'6"	66,295	1,592	1,435	1,274	5.61	10.52	1,877
	6	62,846	22'1"	38'2"	76,553	1,838	1,657	1,471	6.73	11.63	2,168
	7	71,587	25'9"	41'10"	86,811	2,084	1,879	1,668	7.85	12.75	2,458
	8	80,328	29'5"	45'6"	97,069	2,331	2,101	1,865	8.97	13.87	2,749
	9	89,068	33'1"	49'2"	107,327	2,577	2,323	2,062	10.08	14.99	3,039
	10	97,809	36'9"	52'10"	117,585	2,823	2,545	2,259	11.20	16.11	3,330
	11	106,550	40'5"	56'6"	127,843	3,070	2,767	2,456	12.32	17.22	3,620
	12	115,291	44'1"	60'2"	138,101	3,316	2,989	2,653	13.44	18.34	3,911
	13	124,031	47'9"	63'10"	148,359	3,562	3,211	2,850	14.56	19.46	4,201
	14	132,772	51'5"	67'6"	158,617	3,809	3,433	3,047	15.68	20.58	4,492
	15	141,513	55'1"	71'2"	168,875	4,055	3,655	3,244	16.81	21.69	4,782
	16	150,254	58'9"	74'10"	179,133	4,301	3,877	3,441	17.92	22.81	5,072
17	158,994	62'5"	78'6"	189,391	4,548	4,099	3,638	19.03	23.93	5,363	
18	167,735	66'1"	82'2"	199,649	4,794	4,321	3,835	20.14	25.05	5,653	
19	176,476	69'9"	85'10"	209,907	5,040	4,543	4,032	21.25	26.16	5,944	
20	185,217	73'5"	89'6"	220,165	5,287	4,765	4,230	22.36	27.28	6,234	
21	193,957	77'1"	93'2"	230,423	5,533	4,987	4,427	23.47	28.40	6,525	
72	8	119,303	29'5"	48'0"	144,041	3,459	3,117	2,767	8.97	14.63	4,079
	9	131,890	33'1"	51'8"	158,812	3,813	3,437	3,051	10.08	15.74	4,497
	10	144,476	36'9"	55'4"	173,584	4,168	3,757	3,335	11.20	16.86	4,915
	11	157,063	40'5"	59'0"	188,355	4,523	4,076	3,618	12.32	17.98	5,334
	12	169,650	44'1"	62'8"	203,127	4,877	4,396	3,902	13.44	19.10	5,752
	13	182,236	47'9"	66'4"	217,898	5,232	4,716	4,186	14.56	20.21	6,170
	14	194,823	51'5"	70'0"	232,670	5,587	5,035	4,470	15.68	21.33	6,588
	15	207,410	55'1"	73'8"	247,442	5,941	5,355	4,754	16.81	22.45	7,007
	16	219,996	58'9"	77'4"	262,213	6,296	5,675	5,037	17.92	23.57	7,425
	17	232,583	62'5"	81'0"	276,985	6,651	5,994	5,321	19.03	24.68	7,843
	18	245,170	66'1"	84'8"	291,756	7,006	6,314	5,605	20.14	25.80	8,262
19	257,757	69'9"	88'4"	306,528	7,360	6,634	5,889	21.25	26.92	8,690	
20	270,343	73'5"	92'0"	321,299	7,715	6,953	6,172	22.36	28.04	9,098	
21	282,930	77'1"	95'8"	336,071	8,070	7,273	6,456	23.47	29.15	9,516	

- All bins are designed for the storage of grain and other free-flowing materials weighing up to 52 lbs. per cubic foot.
- Max. cubic feet and cubic meters based on 28° angle of repose.
- Max. bushels and metric tons based on 28 degree angle of repose and 6% compaction factor.
- Peak heights shown for 30 degree slope roofs.

- Typical grain densities are as follows:
 - Wheat approximately 800 kg/m³ (50 lb/ft³)
 - Corn approximately 721 kg/m³ (45 lb/ft³)
 - Rice approximately 640 kg/m³ (40 lb/ft³).
- Other rings heights available in some diameters, contact your dealer for details.



STIFFENED BINS - 2.66" CORRUGATION

The 4022 and the 4032 bins are the highest capacity bins offered by GSI. Designed for efficiency and manufactured for strength, these stiffened bins will meet the needs of your commercial operation as you expand and grow your business.

4022 4032



KEY FEATURES

DIAMETERS	18' - 156'
STIFFENERS	2 or 3 per Sidewall Sheet
PEAK LOAD (lbs.)	
18'-36' diameter	6,000 (10k and 30k Z-Tek Roof optional on 36')
42' & 48' diameter	10,000 (30k Z-Tek Roof optional)
54' & 60' diameter	30,000 Z-Tek Roof
72'-78' diameter	30,000 Z-Tek Roof (50k optional)
90'-135' diameter	50,000 Z-Tek Roof (75k & 100k optional)
156' diameter	150,000 Z-Tek Roof
SNOW LOAD	6,000 & 10,000 lb. Roofs are 30 psf Z-Tek Roof is 40 psf
DOOR	1 Ring, 2 Ring, Vehicle Traffic Door (72' and larger)
TEMP CABLE BRACKETS	Standard in 54' - 156' Optional 24' - 48'

4022 & 4032 SPECIFICATIONS

40-SERIES GRAIN BINS

DIAMETER (FEET)	RING	MAXIMUM CAPACITY (BUSHELS) NO PLENUM	EAVE HEIGHT (FEET)	PEAK HEIGHT (FEET)	CAPACITY (CUBIC FEET)	METRIC TONS 800 KG/M ³	METRIC TONS 721 KG/M ³	METRIC TONS 640 KG/M ³	EAVE HEIGHT (METERS)	PEAK HEIGHT (METERS)	MAXIMUM CAP. (CUBIC METERS)
18	12	7,222	32'2"	37'3"	8,475	204	183	163	9.80	11.37	240
	13	7,794	34'10"	39'11"	9,147	220	198	176	10.62	12.19	259
	14	8,366	37'5"	42'7"	9,818	236	212	189	11.43	13.00	278
	15	8,938	40'2"	45'3"	10,490	252	227	202	12.24	13.81	297
	16	9,510	42'10"	47'11"	11,161	268	242	214	13.06	14.63	316
	17	10,082	45'5"	50'7"	11,833	284	256	227	13.87	15.44	335
	18	10,655	48'2"	53'3"	12,504	300	271	240	14.68	16.25	354
21	12	9,907	32'2"	38'2"	11,627	279	252	223	9.80	11.65	329
	13	10,686	34'10"	41'10"	12,541	301	271	241	10.62	12.47	355
	14	11,464	37'5"	43'6"	13,454	323	291	258	11.43	13.28	381
	15	12,243	40'2"	46'2"	14,368	345	311	276	12.24	14.09	407
	16	13,022	42'10"	48'10"	15,282	367	331	294	13.06	14.91	433
	17	13,801	45'5"	51'6"	16,196	389	351	311	13.87	15.72	459
	18	14,579	48'2"	54'2"	17,110	411	370	329	14.68	16.53	485
	19	15,358	50'10"	56'10"	18,024	433	390	346	15.49	17.34	510
	20	16,137	53'6"	59'6"	18,938	455	410	364	16.31	18.16	536
	21	16,915	56'2"	62'2"	19,852	477	430	381	17.12	18.97	562
22	17,694	58'10"	64'10"	20,766	499	449	399	17.93	19.78	588	
24	12	13,041	32'2"	39'0"	15,304	367	331	294	9.80	11.91	433
	13	14,058	34'10"	41'8"	16,498	396	357	317	10.62	12.73	467
	14	15,075	37'6"	44'4"	17,692	425	383	340	11.43	13.54	501
	15	16,092	40'2"	47'0"	18,885	453	409	363	12.24	14.35	535
	16	17,109	42'10"	49'8"	20,079	482	435	386	13.06	15.17	569
	17	18,126	45'6"	53'4"	21,272	511	460	409	13.87	15.98	602
	18	19,143	48'2"	55'0"	22,466	539	486	432	14.68	16.79	636
	19	20,160	50'10"	57'8"	23,660	568	512	455	15.49	17.60	670
	20	21,177	53'6"	60'4"	24,853	597	538	477	16.31	18.42	704
	21	22,195	56'2"	63'0"	26,047	625	564	500	17.12	19.23	738
	22	23,212	58'10"	65'8"	27,241	654	590	523	17.93	20.04	771
	23	24,229	61'6"	68'4"	28,434	683	615	546	18.75	20.86	805
	24	25,246	64'2"	71'0"	29,628	711	641	569	19.56	21.67	839
	25	26,263	66'10"	73'8"	30,822	740	667	592	20.37	22.48	873
26	27,280	69'6"	76'4"	32,015	769	693	615	21.19	23.29	907	
27	28,297	72'2"	79'0"	33,209	791	719	638	22.00	24.11	940	
27	12	16,632	32'2"	39'11"	19,519	469	422	375	9.80	12.19	553
	13	17,919	34'10"	42'7"	21,030	505	455	404	10.62	13.01	596
	14	19,207	37'6"	45'3"	22,541	541	488	433	11.43	13.82	638
	15	20,494	40'2"	47'11"	24,051	578	520	462	12.24	14.63	681
	16	21,781	42'10"	50'7"	25,562	614	553	491	13.06	15.45	724
	17	23,068	45'6"	53'3"	27,073	650	586	520	13.87	16.26	767
	18	24,356	48'2"	55'11"	28,584	686	619	549	14.68	17.07	809
	19	25,643	50'10"	58'7"	30,094	723	651	578	15.49	17.88	852
	20	26,930	53'6"	61'3"	31,605	759	684	607	16.31	18.70	895
	21	28,218	56'2"	63'11"	33,116	795	717	636	17.12	19.51	938
	22	29,505	58'10"	66'7"	34,626	831	749	665	17.93	20.32	981
	23	30,792	61'6"	69'3"	36,137	868	782	694	18.75	21.14	1,023
	24	32,079	64'2"	71'11"	37,648	904	815	723	19.56	21.95	1,066
	25	33,367	66'10"	74'7"	39,159	940	847	752	20.37	22.76	1,109
	26	34,654	69'6"	77'3"	40,669	977	880	781	21.18	23.57	1,152
	27	35,941	72'2"	79'11"	42,180	1,013	913	810	22.00	24.39	1,194
28	37,229	74'10"	82'7"	43,691	1,049	945	839	22.81	25.20	1,237	
29	38,516	77'6"	85'3"	45,202	1,085	978	868	23.63	26.01	1,280	
30	39,803	80'2"	87'11"	46,712	1,122	1,011	897	24.44	26.83	1,323	



4022 & 4032 SPECIFICATIONS

40-SERIES GRAIN BINS

DIAMETER (FEET)	RING	MAXIMUM CAPACITY (BUSHELS) NO PLENUM	EAVE HEIGHT (FEET)	PEAK HEIGHT (FEET)	CAPACITY (CUBIC FEET)	METRIC TONS 800 KG/M ³	METRIC TONS 721 KG/M ³	METRIC TONS 640 KG/M ³	EAVE HEIGHT (METERS)	PEAK HEIGHT (METERS)	MAXIMUM CAP. (CUBIC METERS)
30	12	20,691	32'2"	40'10"	24,283	583	526	466	9.80	12.44	688
	13	22,280	34'10"	43'6"	26,148	628	566	502	10.62	13.26	740
	14	23,870	37'6"	46'2"	28,013	673	606	538	11.43	14.07	793
	15	25,459	40'2"	48'10"	29,878	717	647	574	12.24	14.88	846
	16	27,048	42'10"	51'6"	31,743	762	687	610	13.06	15.70	899
	17	28,637	45'6"	54'2"	33,608	807	727	646	13.87	16.51	952
	18	30,226	48'2"	56'10"	35,473	852	768	681	14.68	17.32	1,004
	19	31,816	50'10"	59'6"	37,338	897	808	717	15.49	18.13	1,057
	20	33,405	53'6"	62'2"	39,203	941	848	753	16.31	18.95	1,110
	21	34,994	56'2"	64'10"	41,069	986	889	789	17.12	19.76	1,163
	22	36,583	58'10"	67'6"	42,934	1,031	929	825	17.93	20.57	1,216
	23	38,173	61'6"	70'2"	44,799	1,076	969	861	18.75	21.39	1,269
	24	39,762	64'2"	72'10"	46,664	1,120	1,010	896	19.56	22.20	1,321
	25	41,351	66'10"	75'6"	48,529	1,165	1,050	932	20.37	23.01	1,374
	26	42,940	69'6"	78'2"	50,394	1,210	1,091	968	21.18	23.82	1,427
	27	44,529	72'2"	80'10"	52,259	1,255	1,131	1,004	22.00	24.64	1,480
	28	46,119	74'10"	83'6"	54,124	1,300	1,171	1,040	22.81	25.45	1,533
29	47,708	77'6"	86'2"	55,989	1,344	1,212	1,076	23.62	26.26	1,585	
30	49,297	80'2"	88'10"	57,854	1,389	1,252	1,111	24.43	27.07	1,638	
31	50,886	82'10"	91'6"	59,720	1,434	1,292	1,147	25.24	27.88	1,691	
32	52,476	85'6"	94'2"	61,585	1,479	1,333	1,183	26.06	28.70	1,744	
33	12	25,227	32'2"	41'8"	29,606	711	641	568	9.80	12.72	837
	13	27,150	34'10"	44'4"	31,863	765	690	611	10.62	13.54	900
	14	29,073	37'6"	47'0"	34,120	819	739	654	11.43	14.35	963
	15	30,996	40'2"	49'8"	36,377	873	788	697	12.24	15.16	1,026
	16	32,919	42'10"	52'4"	38,634	927	837	740	13.06	15.98	1,089
	17	34,842	45'6"	55'0"	40,891	981	886	783	13.87	16.79	1,152
	18	36,765	48'2"	57'8"	43,148	1,035	935	826	14.68	17.60	1,215
	19	38,688	50'10"	60'4"	45,405	1,089	984	869	15.49	18.41	1,278
	20	40,611	53'6"	63'0"	47,662	1,143	1,033	912	16.31	19.23	1,341
	21	42,534	56'2"	65'8"	49,919	1,197	1,082	955	17.12	20.04	1,404
	22	44,457	58'10"	68'4"	52,176	1,251	1,131	998	17.93	20.85	1,467
	23	46,380	61'6"	71'0"	54,433	1,305	1,180	1,041	18.75	21.67	1,530
	24	48,303	64'2"	73'8"	56,690	1,359	1,229	1,084	19.56	22.48	1,593
	25	50,226	66'10"	76'4"	58,947	1,413	1,278	1,127	20.37	23.29	1,656
	26	52,149	69'6"	79'0"	61,204	1,467	1,327	1,170	21.18	24.10	1,719
	27	54,072	72'2"	81'8"	63,461	1,521	1,376	1,213	22.00	24.92	1,782
	28	55,995	74'10"	84'4"	65,718	1,575	1,425	1,256	22.81	25.73	1,845
29	57,918	77'6"	87'0"	67,975	1,629	1,474	1,299	23.62	26.54	1,908	
30	59,841	80'2"	89'8"	70,232	1,683	1,523	1,342	24.43	27.35	1,971	
31	61,764	82'10"	92'4"	72,489	1,737	1,572	1,385	25.25	28.17	2,034	
32	63,687	85'6"	95'0"	74,746	1,791	1,621	1,428	26.06	28.98	2,097	

4022 & 4032 - 36'-54' DIAMETERS CONTINUED ON PAGE 26-27 ►

4022 & 4032 SPECIFICATIONS

40-SERIES GRAIN BINS

◀ 4022 & 4032 - 18'-33' DIAMETERS ON PAGE 24-25

DIAMETER (FEET)	RING	MAXIMUM CAPACITY (BUSHEL) NO PLENUM	EAVE HEIGHT (FEET)	PEAK HEIGHT (FEET)	CAPACITY (CUBIC FEET)	METRIC TONS 800 KG/M ³	METRIC TONS 721 KG/M ³	METRIC TONS 640 KG/M ³	EAVE HEIGHT (METERS)	PEAK HEIGHT (METERS)	MAXIMUM CAP. (CUBIC METERS)
36	12	30,249	32'2"	42'7"	35,500	852	768	682	9.80	12.98	1,005
	13	32,538	34'10"	45'3"	38,186	917	826	734	10.62	13.80	1,081
	14	34,826	37'6"	47'11"	40,871	981	885	785	11.43	14.61	1,157
	15	37,114	40'2"	50'7"	43,557	1,046	943	837	12.24	15.42	1,233
	16	39,403	42'10"	53'3"	46,243	1,110	1,001	888	13.06	16.24	1,309
	17	41,691	45'6"	55'11"	48,928	1,175	1,059	940	13.87	17.05	1,386
	18	43,980	48'2"	58'7"	51,614	1,239	1,117	992	14.68	17.86	1,462
	19	46,268	50'10"	61'3"	54,300	1,304	1,175	1,043	15.49	18.67	1,538
	20	48,557	53'6"	63'11"	56,986	1,368	1,233	1,095	16.31	19.49	1,614
	21	50,845	56'2"	66'7"	59,671	1,433	1,291	1,146	17.12	20.30	1,690
	22	53,134	58'10"	69'3"	62,357	1,497	1,349	1,198	17.93	21.11	1,766
	23	55,422	61'6"	71'11"	65,043	1,562	1,408	1,250	18.75	21.93	1,842
	24	57,711	64'2"	74'7"	67,729	1,626	1,466	1,301	19.56	22.74	1,918
	25	59,999	66'10"	77'3"	70,414	1,691	1,524	1,353	20.37	23.55	1,994
	26	62,288	69'6"	79'11"	73,100	1,755	1,582	1,404	21.18	24.36	2,070
	27	64,576	72'2"	82'7"	75,786	1,820	1,640	1,456	22.00	25.18	2,146
	28	66,865	74'10"	85'3"	78,482	1,884	1,698	1,507	22.81	25.99	2,222
29	69,153	77'6"	87'11"	81,157	1,949	1,756	1,559	23.62	26.80	2,298	
30	71,442	80'2"	90'7"	83,843	2,013	1,814	1,611	24.43	27.61	2,374	
31	73,730	82'10"	93'3"	86,529	2,078	1,873	1,662	25.24	28.42	2,450	
32	76,019	85'6"	95'11"	89,215	2,142	1,931	1,714	26.06	29.23	2,526	
42	12	41,790	32'2"	44'4"	49,044	1,178	1,061	942	9.80	13.49	1,389
	13	44,905	34'10"	47'0"	52,700	1,265	1,140	1,012	10.62	14.31	1,492
	14	48,020	37'6"	49'8"	56,355	1,353	1,220	1,083	11.43	15.12	1,596
	15	51,135	40'2"	52'4"	60,011	1,441	1,299	1,153	12.24	15.93	1,699
	16	54,250	42'10"	54'0"	63,667	1,529	1,378	1,223	13.06	16.44	1,803
	17	57,365	45'6"	56'8"	67,322	1,617	1,457	1,293	13.87	17.25	1,906
	18	60,479	48'2"	59'4"	70,978	1,704	1,536	1,364	14.68	18.06	2,010
	19	63,594	50'10"	62'0"	74,633	1,792	1,615	1,434	15.49	18.88	2,113
	20	66,709	53'6"	64'8"	78,289	1,880	1,694	1,504	16.31	19.69	2,217
	21	69,824	56'2"	67'4"	81,944	1,968	1,773	1,574	17.12	20.50	2,320
	22	72,939	58'10"	70'0"	85,600	2,055	1,852	1,644	17.93	21.31	2,424
	23	76,054	61'6"	72'8"	89,256	2,143	1,932	1,715	18.75	22.13	2,527
	24	79,169	64'2"	75'4"	92,911	2,231	2,011	1,785	19.56	22.94	2,631
	25	82,284	66'10"	78'0"	96,567	2,319	2,090	1,855	20.37	23.75	2,734
	26	85,399	69'6"	80'8"	100,222	2,406	2,169	1,925	21.18	24.57	2,838
	27	88,513	72'2"	83'4"	103,878	2,494	2,248	1,996	22.00	25.38	2,941
	28	91,628	74'10"	86'0"	107,534	2,582	2,327	2,066	22.81	26.19	3,045
29	94,743	77'6"	88'8"	111,189	2,670	2,406	2,136	23.62	27.00	3,149	
30	97,858	80'2"	91'4"	114,845	2,758	2,485	2,206	24.43	27.82	3,252	
31	100,973	82'10"	94'0"	118,500	2,845	2,564	2,276	25.25	28.63	3,356	
32	104,088	85'6"	96'8"	122,156	2,933	2,644	2,347	26.06	29.44	3,459	



4022 & 4032 SPECIFICATIONS

40-SERIES GRAIN BINS

DIAMETER (FEET)	RING	MAXIMUM CAPACITY (BUSHELS) NO PLENUM	EAVE HEIGHT (FEET)	PEAK HEIGHT (FEET)	CAPACITY (CUBIC FEET)	METRIC TONS 800 KG/M ³	METRIC TONS 721 KG/M ³	METRIC TONS 640 KG/M ³	EAVE HEIGHT (METERS)	PEAK HEIGHT (METERS)	MAXIMUM CAP. (CUBIC METERS)
48	12	55,390	32'2"	46'1"	65,005	1,561	1,407	1,249	9.80	14.03	1,841
	13	59,458	34'10"	48'9"	69,779	1,676	1,510	1,341	10.62	14.84	1,976
	14	63,527	37'6"	51'5"	74,554	1,790	1,613	1,432	11.43	15.66	2,111
	15	67,595	40'2"	53'1"	79,329	1,905	1,717	1,524	12.24	16.17	2,246
	16	71,664	42'10"	55'9"	84,103	2,019	1,820	1,616	13.06	16.98	2,382
	17	75,732	45'6"	58'5"	88,878	2,134	1,923	1,707	13.87	17.80	2,517
	18	79,800	48'2"	61'1"	93,653	2,249	2,027	1,799	14.68	18.61	2,652
	19	83,869	50'10"	63'9"	98,427	2,363	2,130	1,891	15.49	19.42	2,787
	20	87,937	53'6"	66'5"	103,202	2,478	2,233	1,983	16.31	20.23	2,922
	21	92,006	56'2"	69'1"	107,977	2,593	2,337	2,074	17.12	21.05	3,058
	22	96,074	58'10"	71'9"	112,751	2,707	2,440	2,166	17.93	21.86	3,193
	23	100,143	61'6"	74'5"	117,526	2,822	2,543	2,258	18.75	22.67	3,328
	24	104,211	64'2"	77'1"	122,300	2,937	2,647	2,349	19.56	23.48	3,463
	25	108,279	66'10"	79'9"	127,075	3,051	2,750	2,441	20.37	24.30	3,598
	26	112,348	69'6"	82'5"	131,850	3,166	2,853	2,533	21.18	25.11	3,734
	27	116,416	72'2"	85'1"	133,624	3,281	2,957	2,625	22.00	25.92	3,859
	28	120,485	74'10"	87'9"	141,399	3,395	3,060	2,716	22.81	26.74	4,004
29	124,553	77'6"	90'5"	146,174	3,510	3,163	2,808	23.62	27.55	4,139	
30	128,622	80'2"	93'1"	150,948	3,625	3,267	2,900	24.43	28.36	4,274	
31	132,690	82'10"	95'9"	155,723	3,739	3,370	2,992	25.25	29.17	4,410	
32	136,758	85'6"	98'5"	160,498	3,854	3,473	3,083	26.06	29.99	4,545	
54	12	71,124	32'2"	46'5"	83,470	2,004	1,806	1,604	9.80	14.14	2,364
	13	76,273	34'10"	49'1"	89,513	2,149	1,937	1,720	10.62	14.95	2,535
	14	81,422	37'6"	51'9"	95,556	2,294	2,068	1,836	11.43	15.76	2,706
	15	86,571	40'2"	54'5"	101,599	2,440	2,199	1,952	12.24	16.58	2,877
	16	91,720	42'10"	57'1"	107,642	2,585	2,329	2,068	13.06	17.39	3,048
	17	96,870	45'6"	59'9"	113,685	2,730	2,460	2,184	13.87	18.20	3,219
	18	102,019	48'2"	62'5"	119,728	2,875	2,591	2,300	14.68	19.01	3,390
	19	107,168	50'10"	65'1"	125,771	3,020	2,722	2,416	15.49	19.83	3,561
	20	112,317	53'6"	67'9"	131,813	3,165	2,853	2,532	16.31	20.64	3,733
	21	117,466	56'2"	70'5"	137,856	3,310	2,983	2,648	17.12	21.45	3,904
	22	122,615	58'10"	73'1"	143,899	3,455	3,114	2,764	17.93	22.27	4,075
	23	127,764	61'6"	75'9"	149,942	3,600	3,245	2,880	18.75	23.08	4,246
	24	132,913	64'2"	78'5"	155,985	3,745	3,376	2,997	19.56	23.89	4,417
	25	138,062	66'10"	81'1"	162,028	3,891	3,506	3,113	20.37	24.70	4,588
	26	143,212	69'6"	83'9"	168,071	4,036	3,637	3,229	21.18	25.52	4,759
	27	148,362	72'2"	86'5"	174,114	4,181	3,768	3,345	22.00	26.33	4,930
	28	153,510	74'10"	89'1"	180,157	4,326	3,899	3,461	22.81	27.14	5,101
	29	158,659	77'6"	91'9"	186,200	4,471	4,030	3,577	23.62	27.96	5,273
	30	163,808	80'2"	94'5"	192,243	4,616	4,160	3,693	24.43	28.77	5,444
	31	168,957	82'10"	97'1"	198,285	4,761	4,291	3,809	25.25	29.58	5,615
	32	174,106	85'6"	99'9"	204,328	4,906	4,422	3,925	26.06	30.39	5,786
33	179,255	88'2"	102'5"	210,371	5,051	4,553	4,041	26.87	31.21	5,957	
34	184,404	90'10"	105'1"	216,414	5,196	4,683	4,157	27.69	32.02	6,128	
35	189,553	93'6"	107'9"	222,457	5,342	4,814	4,274	28.50	32.83	6,299	
36	194,703	96'2"	110'5"	228,500	5,487	4,945	4,390	29.31	33.65	6,470	
37	199,852	98'10"	113'1"	234,543	5,632	5,076	4,506	30.12	34.46	6,642	
38	205,001	101'6"	115'9"	240,586	5,777	5,207	4,622	30.93	35.27	6,814	
39	210,150	104'2"	118'5"	246,629	5,922	5,338	4,738	31.74	36.08	6,986	
40	215,299	106'10"	121'1"	252,672	6,067	5,469	4,854	32.55	36.90	7,158	

4022 & 4032 - 60'-78' DIAMETERS CONTINUED ON PAGE 28-29 ▶

4022 & 4032 SPECIFICATIONS

40-SERIES GRAIN BINS

◀ 4022 & 4032 - 36'-54' DIAMETERS ON PAGE 26-27

DIAMETER (FEET)	RING	MAXIMUM CAPACITY (BUSHEL) NO PLENUM	EAVE HEIGHT (FEET)	PEAK HEIGHT (FEET)	CAPACITY (CUBIC FEET)	METRIC TONS 800 KG/M ³	METRIC TONS 721 KG/M ³	METRIC TONS 640 KG/M ³	EAVE HEIGHT (METERS)	PEAK HEIGHT (METERS)	MAXIMUM CAP. (CUBIC METERS)
60	12	89,068	32'2"	48'2"	104,529	2,510	2,262	2,008	9.80	14.68	2,960
	13	95,425	34'10"	50'10"	111,990	2,689	2,424	2,151	10.62	15.49	3,171
	14	101,782	37'6"	53'6"	119,450	2,868	2,585	2,295	11.43	16.31	3,382
	15	108,139	40'2"	56'2"	126,910	3,047	2,746	2,438	12.24	17.12	3,594
	16	114,496	42'10"	58'10"	134,371	3,226	2,908	2,581	13.06	17.93	3,805
	17	120,853	45'6"	61'6"	141,831	3,406	3,069	2,725	13.87	18.74	4,016
	18	127,210	48'2"	64'2"	149,292	3,585	3,231	2,868	14.68	19.56	4,227
	19	133,567	50'10"	66'10"	156,752	3,764	3,392	3,011	15.49	20.37	4,439
	20	139,924	53'6"	69'6"	164,212	3,943	3,554	3,155	16.31	21.18	4,650
	21	146,281	56'2"	72'2"	171,673	4,122	3,715	3,298	17.12	21.99	4,861
	22	152,638	58'10"	74'10"	179,133	4,301	3,877	3,441	17.93	22.81	5,072
	23	158,994	61'6"	77'6"	186,593	4,480	4,038	3,585	18.75	23.62	5,284
	24	165,351	64'2"	80'2"	194,054	4,660	4,200	3,728	19.56	24.43	5,495
	25	171,708	66'10"	82'10"	201,514	4,839	4,361	3,871	20.37	25.25	5,706
	26	178,065	69'6"	85'6"	208,975	5,018	4,522	4,015	21.18	26.06	5,918
	27	184,422	72'2"	88'2"	216,435	5,197	4,684	4,158	22.00	26.87	6,129
	28	190,779	74'10"	90'10"	223,895	5,376	4,845	4,301	22.81	27.68	6,340
	29	197,136	77'6"	93'6"	231,356	5,555	5,007	4,445	23.62	28.50	6,551
	30	203,493	80'2"	96'2"	238,816	5,734	5,168	4,588	24.43	29.31	6,763
	31	209,850	82'10"	98'10"	246,277	5,913	5,330	4,731	25.25	30.12	6,974
32	216,207	85'6"	101'6"	253,737	6,093	5,491	4,874	26.06	30.94	7,185	
33	222,564	88'2"	104'2"	261,197	6,272	5,653	5,048	26.87	31.75	7,396	
34	228,921	90'10"	106'10"	268,658	6,451	5,814	5,161	27.69	32.56	7,608	
35	235,277	93'6"	109'6"	276,118	6,630	5,976	5,304	28.50	33.37	7,819	
36	241,634	96'2"	112'2"	283,578	6,809	6,137	5,448	29.31	34.19	8,030	
37	247,991	98'10"	114'10"	291,039	6,988	6,298	5,591	30.12	35.00	8,241	
38	254,348	101'6"	117'6"	298,500	7,167	6,459	5,734	30.93	35.81	8,452	
39	260,705	104'2"	120'2"	305,961	7,346	6,620	5,877	31.74	36.63	8,663	
40	267,062	106'10"	122'10"	313,422	7,525	6,781	6,020	32.55	37.44	8,874	
72	12	131,890	32'2"	50'8"	154,784	3,717	3,350	2,973	9.80	15.43	4,383
	13	141,044	34'10"	53'4"	165,527	3,975	3,582	3,180	10.62	16.25	4,687
	14	150,197	37'5"	56'0"	176,269	4,233	3,815	3,386	11.43	17.06	4,991
	15	159,351	40'2"	58'8"	187,012	4,490	4,047	3,593	12.24	17.87	5,296
	16	168,505	42'10"	61'4"	197,755	4,748	4,280	3,799	13.06	18.69	5,600
	17	177,659	45'6"	64'0"	208,498	5,006	4,512	4,005	13.87	19.50	5,904
	18	186,813	48'2"	66'8"	219,241	5,264	4,745	4,212	14.68	20.31	6,208
	19	195,967	50'10"	69'4"	229,984	5,522	4,977	4,418	15.49	21.12	6,512
	20	205,121	53'6"	72'0"	240,727	5,780	5,210	4,625	16.31	21.94	6,817
	21	214,275	56'2"	74'8"	251,470	6,038	5,442	4,831	17.12	22.75	7,121
	22	223,429	58'10"	77'4"	262,213	6,296	5,675	5,037	17.93	23.56	7,425
	23	232,583	61'6"	80'0"	272,956	6,554	5,907	5,244	18.75	24.38	7,729
	24	241,737	64'2"	82'8"	283,699	6,812	6,140	5,450	19.56	25.19	8,033
	25	250,891	66'10"	85'4"	294,442	7,070	6,372	5,656	20.37	26.00	8,338
	26	260,045	69'6"	88'0"	305,185	7,328	6,605	5,863	21.18	26.81	8,642
	27	269,199	72'2"	90'8"	315,928	7,586	6,837	6,069	22.00	27.63	8,946
	28	278,353	74'10"	93'4"	326,671	7,844	7,070	6,276	22.81	28.44	9,250
	29	287,507	77'6"	96'0"	337,414	8,102	7,302	6,482	23.62	29.25	9,554
	30	296,661	80'2"	98'8"	348,157	8,360	7,535	6,688	24.43	30.07	9,859
	31	305,815	82'10"	101'4"	358,900	8,618	7,767	6,895	25.25	30.88	10,163
32	314,969	85'6"	104'0"	369,643	8,876	7,999	7,101	26.06	31.69	10,467	
33	324,123	88'2"	106'8"	380,386	9,134	8,232	7,307	26.87	32.50	10,771	
34	333,277	90'10"	109'4"	391,128	9,392	8,464	7,514	27.69	33.32	11,076	
35	342,431	93'6"	112'0"	401,871	9,650	8,697	7,720	28.50	34.13	11,380	
36	351,585	96'2"	114'8"	412,614	9,908	8,929	7,927	29.31	34.94	11,684	
37	360,739	98'10"	117'4"	423,357	10,165	9,162	8,133	30.12	35.75	11,988	
38	369,893	101'6"	120'0"	434,100	10,422	9,395	8,339	30.93	36.57	12,292	
39	379,047	104'2"	122'8"	444,843	10,679	9,628	8,545	31.74	37.38	12,596	
40	388,201	106'10"	125'4"	455,586	10,936	9,861	8,751	32.55	38.19	12,900	



4022 & 4032 SPECIFICATIONS

40-SERIES GRAIN BINS

DIAMETER (FEET)	RING	MAXIMUM CAPACITY (BUSHEL) NO PLENUM	EAVE HEIGHT (FEET)	PEAK HEIGHT (FEET)	CAPACITY (CUBIC FEET)	METRIC TONS 800 KG/M ³	METRIC TONS 721 KG/M ³	METRIC TONS 640 KG/M ³	EAVE HEIGHT (METERS)	PEAK HEIGHT (METERS)	MAXIMUM CAP. (CUBIC METERS)
75	12	144,094	32'2"	51'6"	169,107	4,061	3,660	3,249	9.80	15.70	4,789
	13	154,027	34'10"	54'3"	180,764	4,340	3,912	3,473	10.62	16.52	5,119
	14	163,960	37'6"	56'11"	192,421	4,620	4,164	3,697	11.43	17.33	5,449
	15	173,892	40'2"	59'6"	204,077	4,900	4,416	3,920	12.24	18.14	5,779
	16	183,825	42'10"	62'3"	215,734	5,180	4,669	4,144	13.06	18.95	6,109
	17	193,758	45'6"	64'11"	227,391	5,460	4,921	4,368	13.87	19.77	6,439
	18	203,690	48'2"	67'6"	239,048	5,740	5,173	4,592	14.68	20.58	6,769
	19	213,623	50'10"	70'3"	250,705	6,020	5,426	4,816	15.49	21.39	7,099
	20	223,556	53'6"	72'11"	262,362	6,300	5,678	5,040	16.31	22.20	7,429
	21	233,488	56'2"	75'6"	274,019	6,580	5,930	5,264	17.12	23.02	7,759
	22	243,421	58'10"	78'3"	285,675	6,860	6,182	5,488	17.93	23.83	8,089
	23	253,354	61'6"	80'11"	297,332	7,139	6,435	5,712	18.75	24.64	8,420
	24	263,287	64'2"	83'6"	308,989	7,419	6,687	5,936	19.56	25.46	8,750
	25	273,219	66'10"	86'3"	320,646	7,699	6,939	6,160	20.37	26.27	9,080
	26	283,152	69'6"	88'11"	332,303	7,979	7,191	6,384	21.18	27.08	9,410
	27	293,085	72'2"	91'6"	343,960	8,259	7,444	6,608	22.00	27.89	9,740
	28	303,017	74'10"	94'3"	355,616	8,539	7,696	6,832	22.81	28.71	10,070
	29	312,950	77'6"	96'11"	367,273	8,819	7,948	7,056	23.62	29.52	10,400
	30	322,883	80'2"	99'6"	378,930	9,099	8,200	7,280	24.43	30.33	10,730
	31	332,815	82'10"	102'3"	390,587	9,379	8,453	7,503	25.25	31.15	11,060
32	342,748	85'6"	104'11"	402,244	9,658	8,705	7,727	26.06	31.96	11,390	
33	352,681	88'2"	107'6"	413,901	9,938	8,957	7,951	26.87	32.77	11,720	
34	362,613	90'10"	110'3"	425,558	10,218	9,210	8,175	27.69	33.58	12,050	
35	372,546	93'6"	112'11"	437,214	10,498	9,462	8,399	28.50	34.40	12,381	
36	382,479	96'2"	115'6"	448,871	10,778	9,714	8,623	29.31	35.21	12,711	
37	392,411	98'10"	118'3"	460,528	11,058	9,966	8,847	30.12	36.02	13,041	
38	402,343	101'6"	120'11"	472,185	11,338	10,218	9,071	30.93	36.84	13,371	
39	412,275	104'2"	123'6"	483,842	11,618	10,470	9,295	31.74	37.65	13,701	
40	422,207	106'10"	126'3"	495,499	11,898	10,722	9,519	32.55	38.46	14,031	
78	12	156,918	32'2"	52'5"	184,156	4,422	3,985	3,538	9.80	15.97	5,215
	13	167,661	34'10"	55'1"	196,764	4,725	4,258	3,780	10.62	16.78	5,572
	14	178,404	37'6"	57'9"	209,372	5,027	4,531	4,022	11.43	17.59	5,929
	15	189,147	40'2"	60'5"	221,981	5,330	4,804	4,264	12.24	18.41	6,286
	16	199,891	42'10"	63'1"	234,589	5,633	5,077	4,507	13.06	19.22	6,643
	17	210,634	45'6"	65'9"	247,197	5,936	5,350	4,749	13.87	20.03	7,000
	18	221,377	48'2"	68'5"	259,805	6,238	5,622	4,991	14.68	20.84	7,357
	19	232,120	50'10"	71'1"	272,413	6,541	5,895	5,233	15.49	21.66	7,714
	20	242,863	53'6"	73'9"	285,021	6,844	6,168	5,475	16.31	22.47	8,071
	21	253,607	56'2"	76'5"	297,629	7,147	6,441	5,718	17.12	23.28	8,428
	22	264,350	58'10"	79'1"	310,237	7,449	6,714	5,960	17.93	24.10	8,785
	23	275,093	61'6"	81'9"	322,845	7,752	6,987	6,202	18.75	24.91	9,142
	24	285,836	64'2"	84'5"	335,453	8,055	7,260	6,444	19.56	25.72	9,499
	25	296,579	66'10"	87'1"	348,061	8,357	7,532	6,686	20.37	26.53	9,856
	26	307,322	69'6"	89'9"	360,669	8,660	7,805	6,929	21.18	27.35	10,213
	27	318,066	72'2"	92'5"	373,277	8,963	8,078	7,171	22.00	28.16	10,570
	28	328,809	74'10"	95'1"	385,885	9,266	8,351	7,413	22.81	28.97	10,927
	29	339,552	77'6"	97'9"	398,493	9,568	8,624	7,655	23.62	29.78	11,284
	30	350,295	80'2"	100'5"	411,101	9,871	8,897	7,898	24.43	30.60	11,641
	31	361,038	82'10"	103'1"	423,709	10,174	9,170	8,140	25.25	31.41	11,998
32	371,782	85'6"	105'9"	436,317	10,477	9,442	8,382	26.06	32.22	12,355	
33	382,525	88'2"	108'5"	448,925	10,779	9,715	8,624	26.87	33.04	12,712	
34	393,268	90'10"	111'1"	461,533	11,082	9,988	8,866	27.69	33.85	13,069	
35	404,011	93'6"	113'9"	474,141	11,385	10,261	9,109	28.50	34.66	13,426	
36	414,754	96'2"	116'5"	486,749	11,688	10,534	9,351	29.31	35.47	13,783	
37	425,498	98'10"	119'1"	499,358	11,990	10,807	9,593	30.12	36.29	14,140	
38	436,242	101'6"	121'9"	511,967	12,292	11,080	9,835	30.93	37.10	14,497	
39	446,986	104'2"	124'5"	524,576	12,594	11,353	10,077	31.74	37.91	14,854	
40	457,730	106'10"	127'1"	537,185	12,896	11,626	10,319	32.55	38.73	15,211	

4022 & 4032 - 90'-135' DIAMETERS CONTINUED ON PAGE 30-31 ▶

4022 & 4032 SPECIFICATIONS

40-SERIES GRAIN BINS

◀ 4022 & 4032 - 60'-78' DIAMETERS ON PAGE 28-29

DIAMETER (FEET)	RING	MAXIMUM CAPACITY (BUSHELS) NO PLENUM	EAVE HEIGHT (FEET)	PEAK HEIGHT (FEET)	CAPACITY (CUBIC FEET)	METRIC TONS 800 KG/M ³	METRIC TONS 721 KG/M ³	METRIC TONS 640 KG/M ³	EAVE HEIGHT (METERS)	PEAK HEIGHT (METERS)	MAXIMUM CAP. (CUBIC METERS)
90	12	214,588	32'2"	56'0"	251,837	6,047	5,450	4,838	9.80	17.05	7,131
	13	228,891	34'10"	58'8"	268,623	6,450	5,813	5,160	10.62	17.87	7,607
	14	243,194	37'6"	61'4"	285,409	6,853	6,177	5,483	11.43	18.68	8,082
	15	257,497	40'2"	64'0"	302,195	7,256	6,540	5,805	12.24	19.49	8,557
	16	271,800	42'10"	66'8"	318,981	7,659	6,903	6,128	13.06	20.30	9,033
	17	286,103	45'6"	69'4"	335,766	8,062	7,266	6,450	13.87	21.12	9,508
	18	300,406	48'2"	72'0"	352,552	8,465	7,630	6,773	14.68	21.93	9,983
	19	314,709	50'10"	74'8"	369,338	8,868	7,993	7,095	15.49	22.74	10,458
	20	329,012	53'6"	77'4"	386,124	9,271	8,356	7,418	16.31	23.56	10,934
	21	343,316	56'2"	80'0"	402,910	9,674	8,719	7,740	17.12	24.37	11,409
	22	357,619	58'10"	82'8"	419,696	10,078	9,083	8,063	17.93	25.18	11,884
	23	371,922	61'6"	85'4"	436,482	10,481	9,446	8,385	18.75	25.99	12,360
	24	386,225	64'2"	88'0"	453,267	10,884	9,809	8,708	19.56	26.81	12,835
	25	400,528	66'10"	90'8"	470,053	11,287	10,173	9,030	20.37	27.62	13,310
	26	414,831	69'6"	93'4"	486,839	11,690	10,536	9,353	21.18	28.43	13,786
	27	429,134	72'2"	96'0"	503,625	12,093	10,899	9,675	22.00	29.25	14,261
	28	443,437	74'10"	98'8"	520,411	12,496	11,262	9,997	22.81	30.06	14,736
	29	457,740	77'6"	101'4"	537,197	12,899	11,626	10,320	23.62	30.87	15,212
	30	472,043	80'2"	104'0"	553,983	13,302	11,989	10,642	24.43	31.68	15,687
	31	486,346	82'10"	106'8"	570,768	13,705	12,352	10,965	25.25	32.50	16,162
32	500,649	85'6"	109'4"	587,554	14,108	12,715	11,287	26.06	33.31	16,638	
33	514,952	88'2"	112'0"	604,340	14,511	13,079	11,610	26.87	34.12	17,113	
34	529,255	90'10"	114'8"	621,126	14,914	13,442	11,932	27.69	34.93	17,588	
35	543,558	93'6"	117'4"	637,912	15,317	13,805	12,255	28.50	35.75	18,064	
36	557,861	96'2"	120'0"	654,698	15,720	14,168	12,577	29.31	36.56	18,539	
37	572,165	98'10"	122'8"	671,484	16,123	14,532	12,900	30.12	37.37	19,014	
38	586,469	101'6"	125'4"	688,270	16,526	14,896	13,223	30.93	38.21	19,489	
39	600,773	104'2"	128'0"	705,056	16,929	15,260	13,546	31.74	39.00	19,964	
40	615,077	106'10"	130'8"	721,842	17,332	15,624	13,869	32.55	39.81	20,439	
105	12	301,731	32'2"	60'4"	354,107	8,503	7,663	6,803	9.80	18.38	10,027
	13	321,199	34'10"	63'0"	376,955	9,051	8,158	7,242	10.62	19.19	10,674
	14	340,667	37'6"	65'8"	399,802	9,600	8,652	7,680	11.43	20.01	11,321
	15	360,135	40'2"	68'4"	422,649	10,148	9,147	8,119	12.24	20.82	11,968
	16	379,603	42'10"	71'0"	445,497	10,697	9,641	8,558	13.06	21.63	12,615
	17	399,071	45'6"	73'8"	468,344	11,246	10,136	8,997	13.87	22.45	13,262
	18	418,540	48'2"	76'4"	491,192	11,794	10,630	9,436	14.68	23.26	13,909
	19	438,008	50'10"	79'0"	514,039	12,343	11,124	9,875	15.49	24.07	14,556
	20	457,476	53'6"	81'8"	536,886	12,891	11,619	10,314	16.31	24.88	15,203
	21	476,944	56'2"	84'4"	559,734	13,440	12,113	10,753	17.12	25.70	15,850
	22	496,412	58'10"	87'0"	582,581	13,989	12,608	11,192	17.93	26.51	16,497
	23	515,880	61'6"	89'8"	605,429	14,537	13,102	11,631	18.75	27.32	17,144
	24	535,348	64'2"	92'4"	628,276	15,086	13,597	12,070	19.56	28.13	17,791
	25	554,816	66'10"	95'0"	651,124	15,634	14,091	12,509	20.37	28.95	18,438
	26	574,284	69'6"	97'8"	673,971	16,183	14,586	12,947	21.18	29.76	19,085
	27	593,752	72'2"	100'4"	696,818	16,732	15,080	13,386	22.00	30.57	19,732
	28	613,220	74'10"	103'0"	719,666	17,280	15,574	13,825	22.81	31.39	20,379
	29	632,688	77'6"	105'8"	742,513	17,829	16,069	14,264	23.62	32.20	21,026
	30	652,156	80'2"	108'4"	765,361	18,377	16,563	14,703	24.43	33.01	21,673
	31	671,624	82'10"	111'0"	788,208	18,926	17,058	15,142	25.25	33.82	22,320
32	691,092	85'6"	113'8"	811,056	19,475	17,552	15,581	26.06	34.64	22,967	
33	710,560	88'2"	116'4"	833,903	20,023	18,047	16,020	26.87	35.45	23,614	
34	730,028	90'10"	119'0"	856,750	20,572	18,541	16,459	27.69	36.26	24,260	
35	749,497	93'6"	121'8"	879,598	21,121	19,036	16,898	28.50	37.08	24,907	
36	768,965	96'2"	124'4"	902,445	21,669	19,530	17,337	29.31	37.89	25,554	
37	788,433	98'10"	127'0"	925,293	22,218	20,024	17,776	30.12	38.70	26,201	
38	807,901	101'6"	129'8"	948,141	22,767	20,518	18,215	30.93	39.51	26,848	
39	827,369	104'2"	132'4"	970,989	23,316	21,012	18,654	31.74	40.33	27,495	
40	846,837	106'10"	135'0"	993,837	23,865	21,506	19,093	32.55	41.14	28,142	



4022 & 4032 SPECIFICATIONS

40-SERIES GRAIN BINS

DIAMETER (FEET)	RING	MAXIMUM CAPACITY (BUSHELS) NO PLENUM	EAVE HEIGHT (FEET)	PEAK HEIGHT (FEET)	CAPACITY (CUBIC FEET)	METRIC TONS 800 KG/M ³	METRIC TONS 721 KG/M ³	METRIC TONS 640 KG/M ³	EAVE HEIGHT (METERS)	PEAK HEIGHT (METERS)	MAXIMUM CAP. (CUBIC METERS)
135	19	755,968	50'10"	86'9"	887,192	21,303	19,200	17,044	15.49	26.43	25,122
	20	788,150	53'6"	89'5"	924,961	22,210	20,017	17,769	16.31	27.25	26,192
	21	820,332	56'2"	92'1"	962,729	23,117	20,835	18,495	17.12	28.06	27,261
	22	852,513	58'10"	94'9"	1,000,497	24,023	21,652	19,220	17.93	28.87	28,331
	23	884,695	61'6"	97'5"	1,038,265	24,930	22,469	19,946	18.75	29.68	29,400
	24	916,877	64'2"	100'1"	1,076,033	25,837	23,287	20,671	19.56	30.50	30,470
	25	949,059	66'10"	102'9"	1,113,801	26,744	24,104	21,397	20.37	31.31	31,539
	26	981,241	69'6"	105'5"	1,151,570	27,651	24,921	22,122	21.18	32.12	32,609
	27	1,013,423	72'2"	108'1"	1,189,338	28,558	25,739	22,848	22.00	32.94	33,678
	28	1,045,605	74'10"	110'9"	1,227,106	29,465	26,556	23,574	22.81	33.75	34,748
	29	1,077,787	77'6"	113'5"	1,264,874	30,372	27,373	24,299	23.62	34.56	35,817
	30	1,109,969	80'2"	116'1"	1,302,642	31,278	28,191	25,025	24.43	35.37	36,887
	31	1,142,150	82'10"	118'9"	1,340,411	32,185	29,008	25,750	25.25	36.19	37,956
	32	1,174,332	85'6"	121'5"	1,378,179	33,092	29,825	26,476	26.06	37.00	39,026
	33	1,206,514	88'2"	124'1"	1,415,947	33,999	30,643	27,201	26.87	37.81	40,095
	34	1,238,696	90'10"	126'9"	1,453,715	34,906	31,460	27,927	27.69	38.63	41,165
	35	1,270,878	93'6"	129'5"	1,491,483	35,813	32,277	28,653	28.50	39.44	42,235
	36	1,303,060	96'2"	132'1"	1,529,251	36,720	33,094	29,379	29.31	40.25	43,305
	37	1,335,242	98'10"	134'9"	1,567,019	37,627	33,911	30,105	30.12	41.06	44,375
	38	1,367,424	101'6"	137'5"	1,604,787	38,534	34,728	30,831	30.93	41.88	45,445
39	1,399,606	104'2"	140'1"	1,642,555	39,441	35,545	31,557	31.74	42.69	46,515	
40	1,431,788	106'10"	142'9"	1,680,323	40,348	36,362	32,283	32.55	43.50	47,585	
156	12	738,303	32'2"	74'3"	866,461	20,805	18,751	16,645	9.80	28.17	24,535
	13	781,275	34'10"	76'11"	916,893	22,016	19,843	17,614	10.62	28.98	25,964
	14	824,248	37'6"	79'7"	967,325	23,227	20,934	18,583	11.43	29.79	27,392
	15	867,221	40'2"	82'3"	1,017,757	24,438	22,025	19,552	12.24	30.61	28,820
	16	910,194	42'10"	84'11"	1,068,190	25,649	23,117	20,521	13.06	31.42	30,248
	17	953,166	45'6"	87'7"	1,118,622	26,860	24,208	21,489	13.87	32.23	31,676
	18	996,139	48'2"	90'3"	1,169,054	28,071	25,300	22,458	14.68	33.04	33,104
	19	1,039,112	50'10"	92'11"	1,219,486	29,282	26,391	23,427	15.49	33.86	34,532
	20	1,082,085	53'6"	95'7"	1,269,918	30,493	27,483	24,396	16.31	34.67	35,960
	21	1,125,058	56'2"	98'3"	1,320,351	31,704	28,574	25,365	17.12	35.48	37,388
	22	1,168,030	58'10"	100'11"	1,370,783	32,915	29,665	26,334	17.93	36.29	38,816
	23	1,211,003	61'6"	103'7"	1,421,215	34,126	30,757	27,303	18.75	37.11	40,244
	24	1,253,976	64'2"	106'3"	1,471,647	35,337	31,848	28,271	19.56	37.92	41,672
	25	1,296,949	64'10"	108'11"	1,522,079	36,547	32,940	29,240	20.37	38.73	43,100
	26	1,339,921	69'6"	111'7"	1,572,512	37,758	34,031	30,209	21.18	39.55	44,529
	27	1,382,894	72'2"	114'3"	1,622,944	38,969	35,122	31,178	22.00	40.36	45,957
	28	1,425,867	74'10"	116'11"	1,673,376	40,180	36,214	32,147	22.81	41.17	47,385
	29	1,468,840	77'6"	119'7"	1,723,808	41,391	37,305	33,116	23.62	41.98	48,813
	30	1,511,812	80'2"	122'3"	1,774,240	42,602	38,397	34,084	24.43	42.80	50,241
	31	1,554,785	82'10"	124'11"	1,824,672	43,813	39,488	35,053	25.25	43.61	51,669
32	1,597,758	85'6"	127'7"	1,875,105	45,024	40,579	36,022	26.06	44.42	53,097	
33	1,640,731	88'2"	130'3"	1,925,537	46,235	41,671	36,991	26.87	45.24	54,525	
34	1,683,703	90'10"	132'11"	1,975,969	47,446	42,762	37,960	27.69	46.05	55,953	
35	1,726,676	93'6"	135'7"	2,026,401	48,657	43,854	38,929	28.50	46.86	57,381	
36	1,769,649	96'2"	138'3"	2,076,833	49,868	44,945	39,897	29.31	47.67	58,809	
37	1,812,622	98'10"	140'11"	2,127,266	51,079	46,037	40,866	30.12	48.49	60,237	
38	1,855,595	101'6"	143'7"	2,177,698	52,290	47,128	41,835	30.93	49.30	61,666	
39	1,898,567	104'2"	146'3"	2,228,130	53,501	48,219	42,804	31.74	50.11	63,094	
40	1,941,540	106'10"	148'11"	2,278,562	54,712	49,311	43,773	32.55	50.93	64,522	

- All bins are designed for the storage of grain and other free-flowing materials weighing up to 52 lbs. per cubic foot.
- Max. cubic feet and cubic meters based on 28° angle of repose.
- Max. bushels and metric tons based on 28 degree angle of repose and 6% compaction factor.
- Peak heights shown for 30 degree slope roofs.

- Typical grain densities are as follows:
 - Wheat approximately 800 kg/m³ (50 lb/ft³)
 - Corn approximately 721 kg/m³ (45 lb/ft³)
 - Rice approximately 640 kg/m³ (40 lb/ft³).
- Other rings heights available in some diameters, contact your dealer for details.

COMPLETE YOUR GSI SYSTEM

WWW.GRAINSYSTEMS.COM



TOPDRY

Grain in the overhead chamber is dried by a large fan and heater then dumped to a holding area below. An aeration fan below captures heat from this previously dried grain, and pushes it upward to help dry the next load. This recycling of heat increases efficiency, which greatly reduces drying costs.



MATERIAL HANDLING

GSI's material handling line includes bucket elevators, chain conveyors, belt conveyors, bin unloads, and chain loops. Also available are towers, catwalks, and support structures.



DRYING AND CONDITIONING

Today's farm operations have greatly varied needs for their drying solutions. Size, type, and investment all play a part in the decision for which to use. GSI provides systems of every size and type to help with those needs. Options include TopDry, Portable, Modular, and T-Series Tower Dryers.



GLOBAL SOLUTIONS. LOCAL SUPPORT.

GSI and GSI Dealers alike share the same passion and commitment to our customers. GSI Dealers understand down time is not an option, construction schedules must be met. From site planning to installation and service, GSI Dealers are the proven partners for your operation. When you buy GSI, you get the quality product of a worldwide leader and the dependable service of your local Dealership.

**TO FIND YOUR LOCAL GSI DEALER,
VISIT THE GSI DEALER LOCATOR
AT WWW.GRAINSYSTEMS.COM**



 **AGCO**
Your Agriculture Company

Copyright ©2016 All rights reserved.
GSI reserves the right to change
designs and specifications without notice.

GS-401 APRIL 2019